



600X600 MM

OUTDOOR
FULLBODY 15MM

volark
TILES

600x600mm



Surface : Matt
Category : Basic

1650

DECK
PUNCH



600x600mm



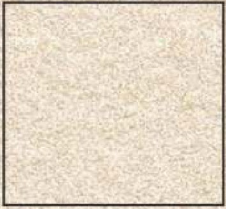
Surface : Matt
Category : Basic

1651

DECK
PUNCH



600x600mm



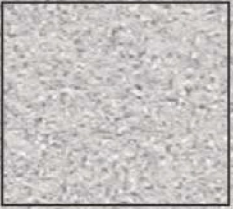
Surface : Matt
Category : Basic

1652

BLAST
PUNCH



600x600mm

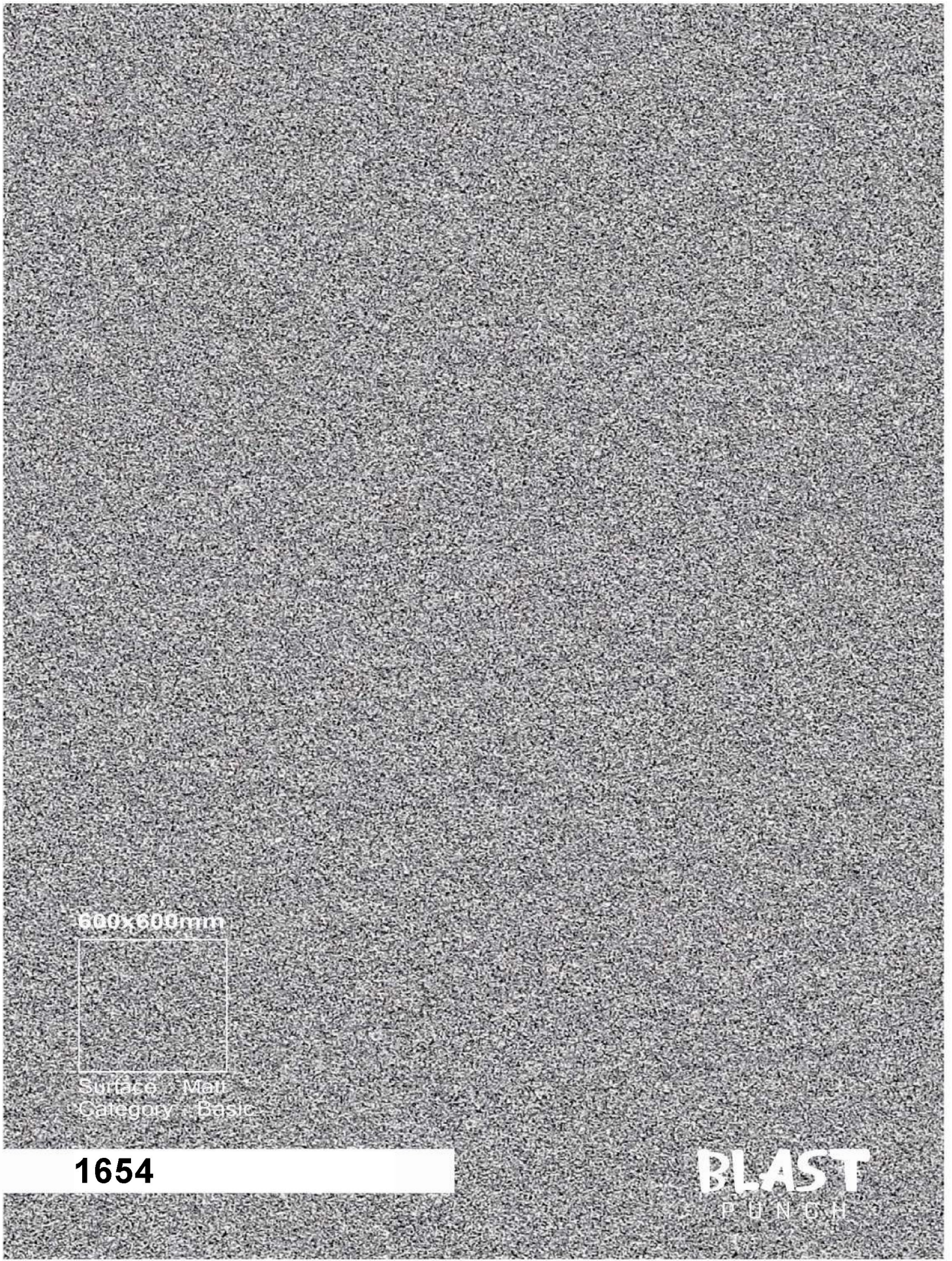


Surface : Matt
Category : Basic

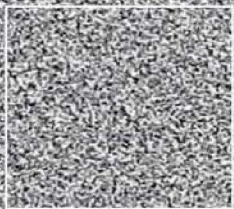
1653

BLAST
PUNCH





600x600mm



Surface : Matt
Category : Basic

1654

BLAST
FINISH





600x600mm

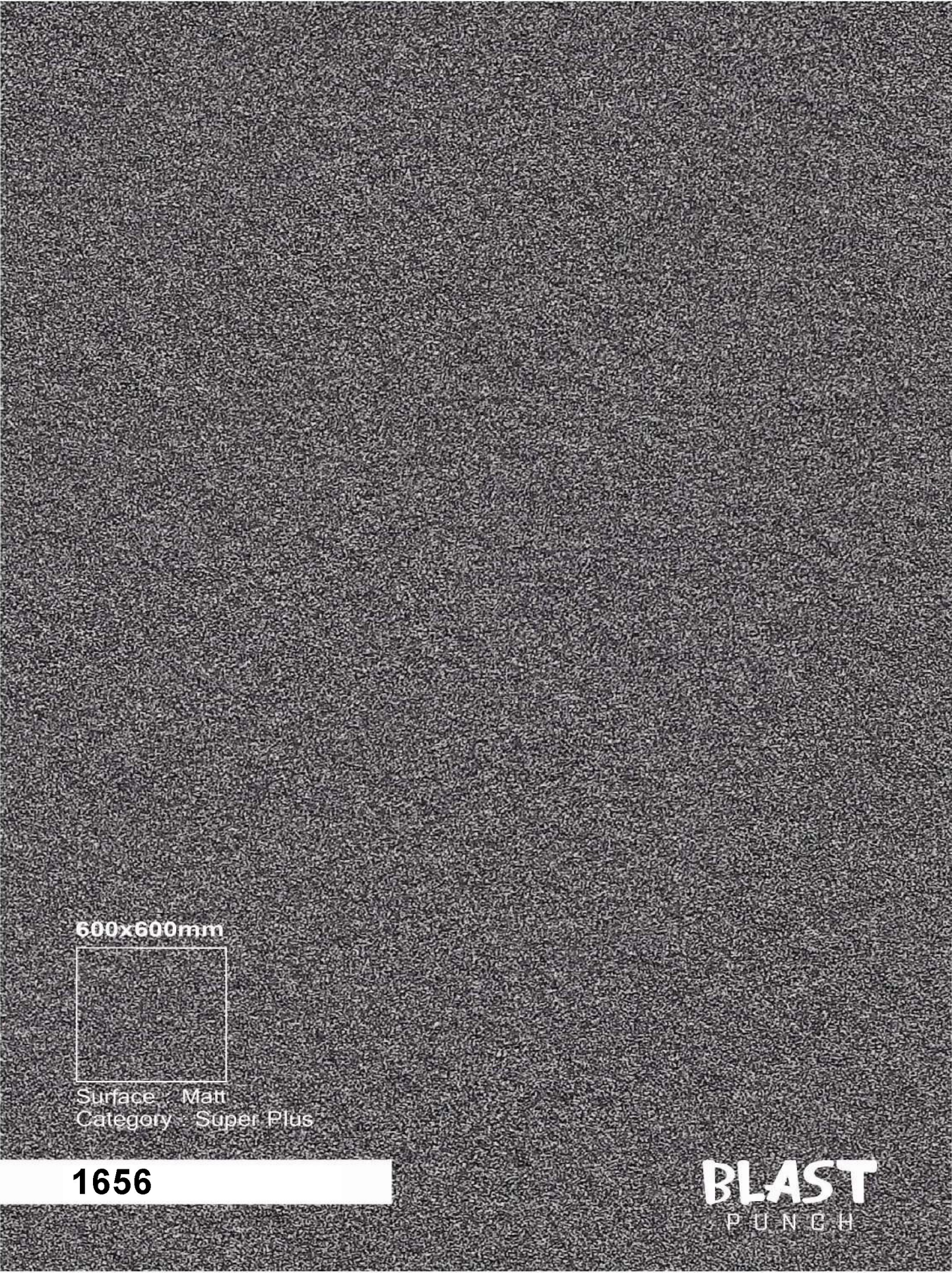


Surface : Matt
Category : Plus

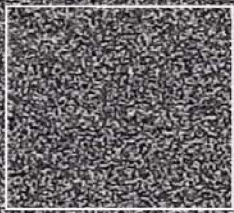
1655

BLAST
PUNCH





600x600mm



Surface : Matt
Category : Super Plus

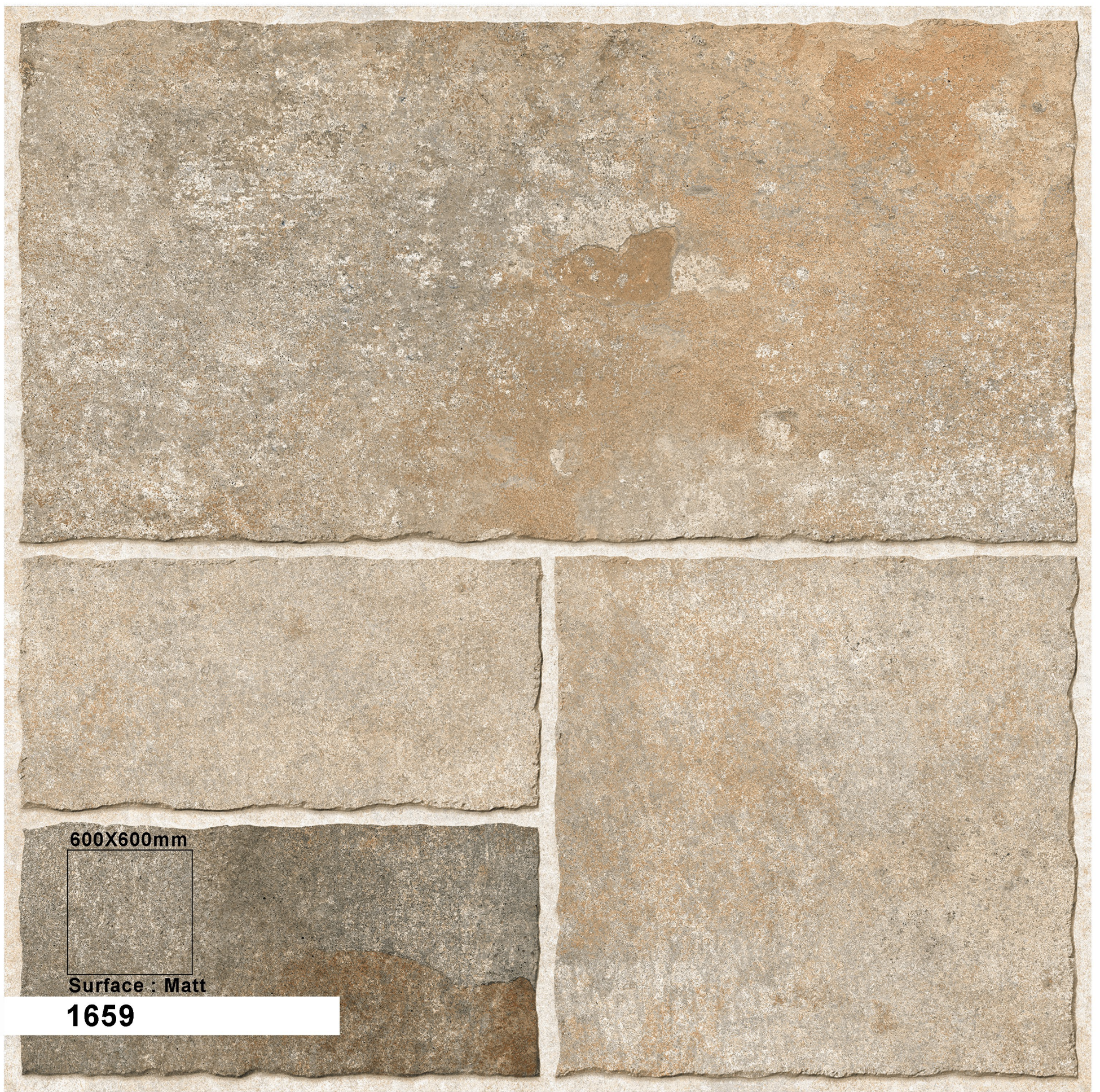
1656

BLAST
PUNCH









TECHNICAL SPECIFICATIONS

CHARACTERISTIC	STANDARD AS PER ISO 13006:2018/EN14411 GR.BLA	METHOD OF TESTING	OUR VALUE
----------------	---	-------------------	-----------

Regulatory Properties			
Deviation in length and width	± 0.30 % (± 1.00 mm)	ISO 10545-2	± 0.10 %
Deviation in thickness	± 5.0 % (± 3.50 mm)	ISO 10545-2	± 4.00 %
Straightness in side	± 0.30 % (± 0.80 mm)	ISO 10545-2	± 0.10 %
Rectangularity	± 0.30 % (± 1.50 mm)	ISO 10545-2	± 0.10 %
Surface Flatness Central Curvature	± 0.40 % (± 1.80 mm)	ISO 10545-2	± 0.20 %
Surface Flatness Edge Curvature	± 0.40 % (± 1.80 mm)	ISO 10545-2	± 0.20 %
Surface Flatness warpage	± 0.40 % (± 1.80 mm)	ISO 10545-2	± 0.10 %
Surface Quality	>95% defects free	ISO 10545-2	>95% defects free
Small Color Diffrence (for Plain Color)	E <1.00	ISO 10545-16	E <0.30
Glossiness (Matt)	As per Manufacture	Gloss Meter 60*	3 <Gloss Value <7
Structural Properties			
Water Absorption	≤0.50 %	ISO 10545-3	≤0.060 %
Bulk Density	As per Manufacture	ISO 10545-3	> 2.28 gm/cc
Surface Mechanical Properties			
MOH S.Hardness #	As per Manufacture	BS EN 15771	Polished min4*/ SatinPosh & Matt Min 6
Surface Abrasion Resistance #	As per Manufacture	ISO 10545-7	Polished min Class2,Satin & Posh Min class 3,Matt Min Class 4
Deep Abrasion Resistance #	Max 175 mm ²	ISO 10545-6	Max 132 mm ²
Thermal Hygrometric Properties			
Moisture Expansion	Max 0.06% (0.6 mm/m)	ISO 10545-10	Max 0.02mm/m
Thermal Expansion(COE) at 100°C	As per Manufacture	ISO 10545-8	Max 6.0x10 ⁻⁶
Thermal Shock Resistance	Min10 Cycle	ISO 10545-9	Min 10 Cycle
Impact Resistance(COR) #	Min 0.55	ISO 10545-5	Min 0.55
Frost Resistance	As per Manufacture	ISO 10545-12	Frost Proof
Chemical Properties			
Resistance to Staining Glazed	Min Class 3	ISO 10545-14	Min.Class 4
Resistance to Household Chemicals & Swimming Pool Salts Glazed	Min Class GB	ISO 10545-13	Min Class GA
Safety properties			
Skid Resistance-(DCOF-WET PENDULUM)##	As per Manufacture	BS 7976-2	Glossy po(<12), Satin,Posh ≥P1(12-24) Matt ≥P2(25-34)
Slip Resistance-Satin/Matt(DCOF) (R Value)##	As per Manufacture	DIN 51130	R10 to R12
Fire Resistance	As per Manufacture	N.A	Fire Proff

PACKING DETAILS

SIZE	THICKNESS	TILES PER BOX	COVERAGE AREA (Approx)
600X600 MM	15 MM(Approx)	2 Pcs.	0.72 sq. mt



www.volarktiles.com