

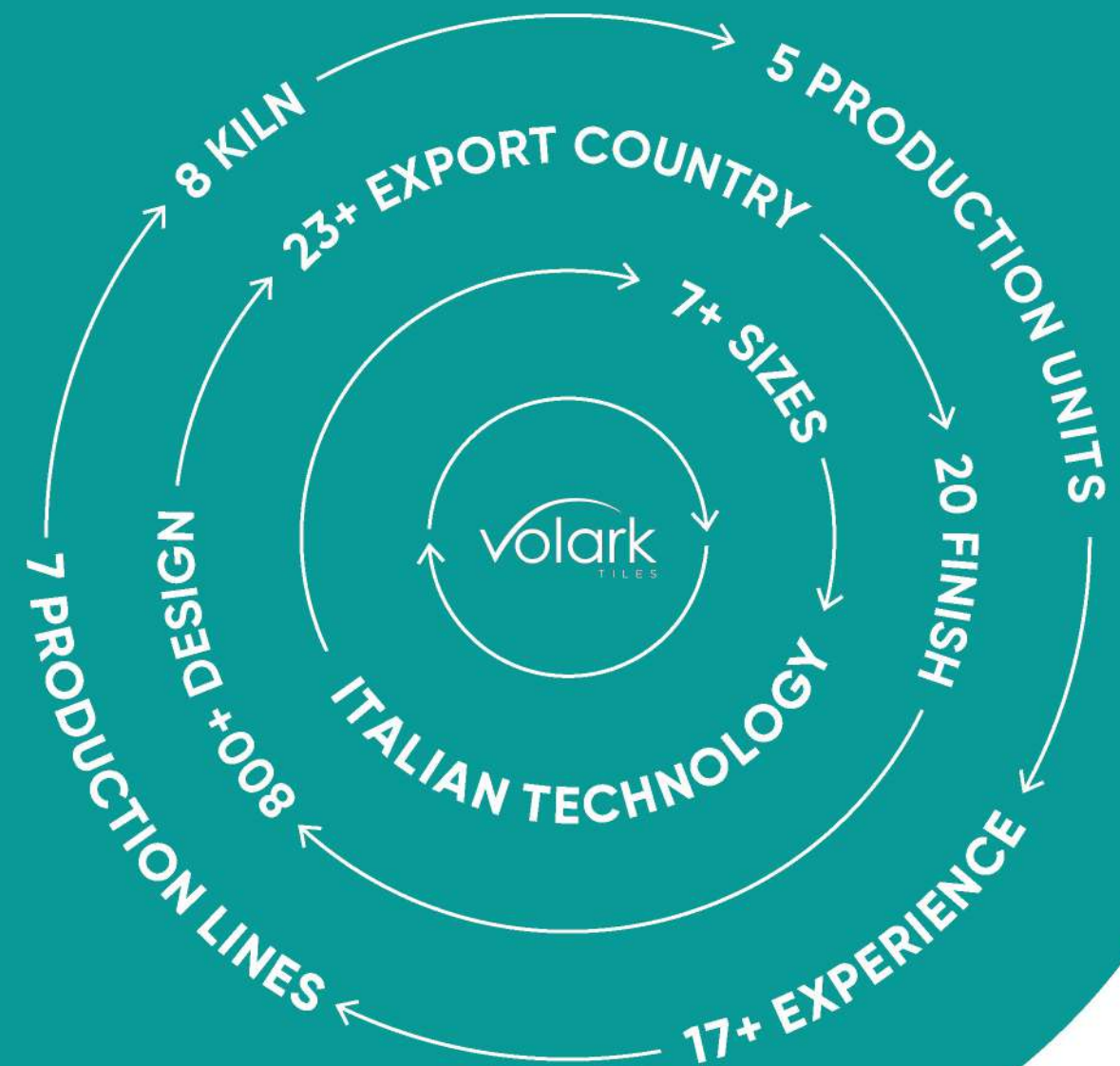


**FEEL THE ARTS
EXPRESSION
OF ARCHITECTURE**

GLAM
SURFACE



FROM THE
BEGINNING
TO
THE FUTURE



MOVE ON DISCOVERY

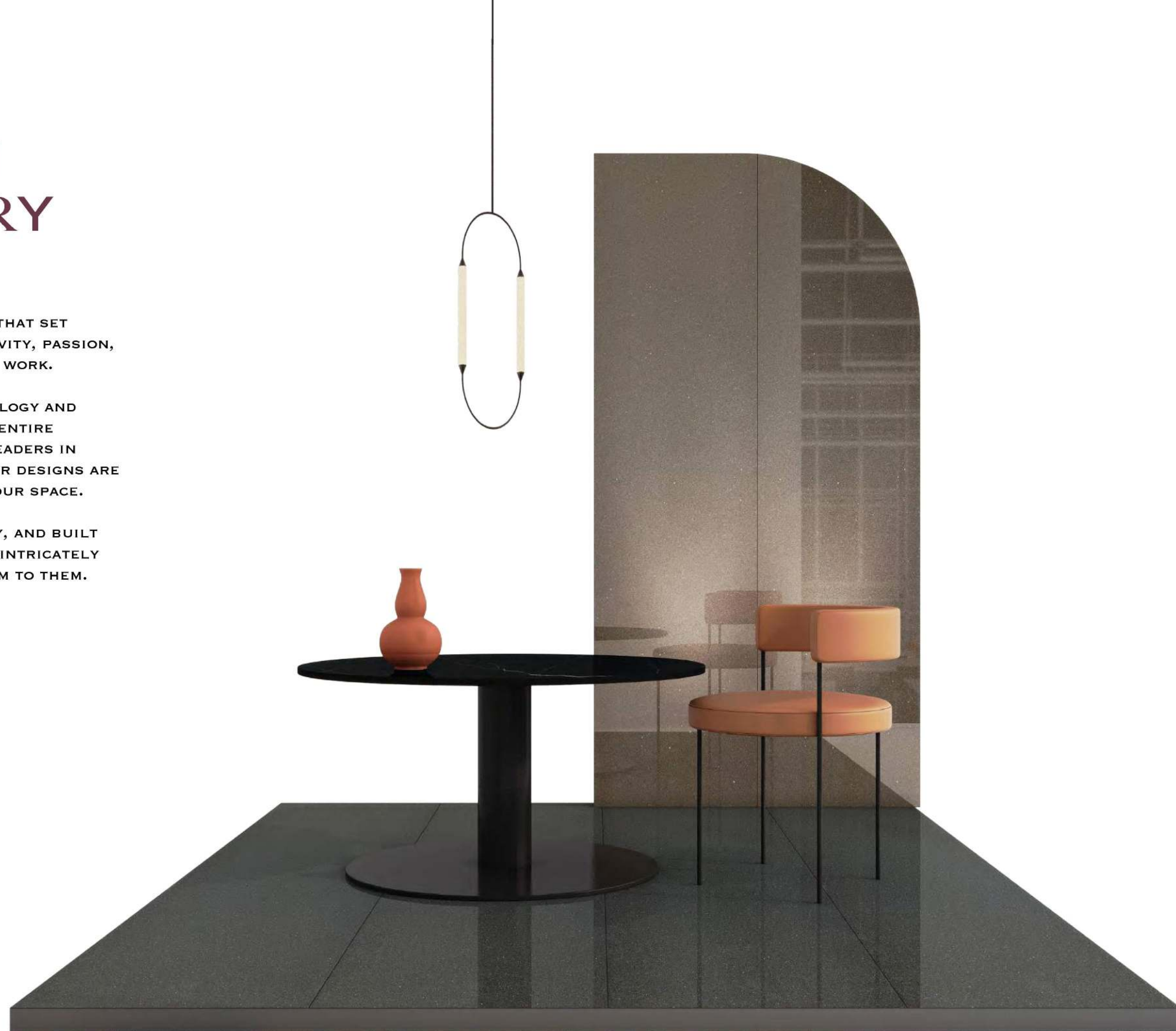
AT VOLARK, WE DESIGN PRODUCTS THAT SET FORTH EXAMPLES OF SHEER CREATIVITY, PASSION, AND AN IMMENSE AMOUNT OF HARD WORK.

INCORPORATING ADVANCED TECHNOLOGY AND HIGH-QUALITY MATERIAL INTO OUR ENTIRE PRODUCT IS WHAT MAKES US THE LEADERS IN THE CERAMIC INDUSTRY. ALL OF OUR DESIGNS ARE MADE TO SUIT THE AESTHETIC OF YOUR SPACE.

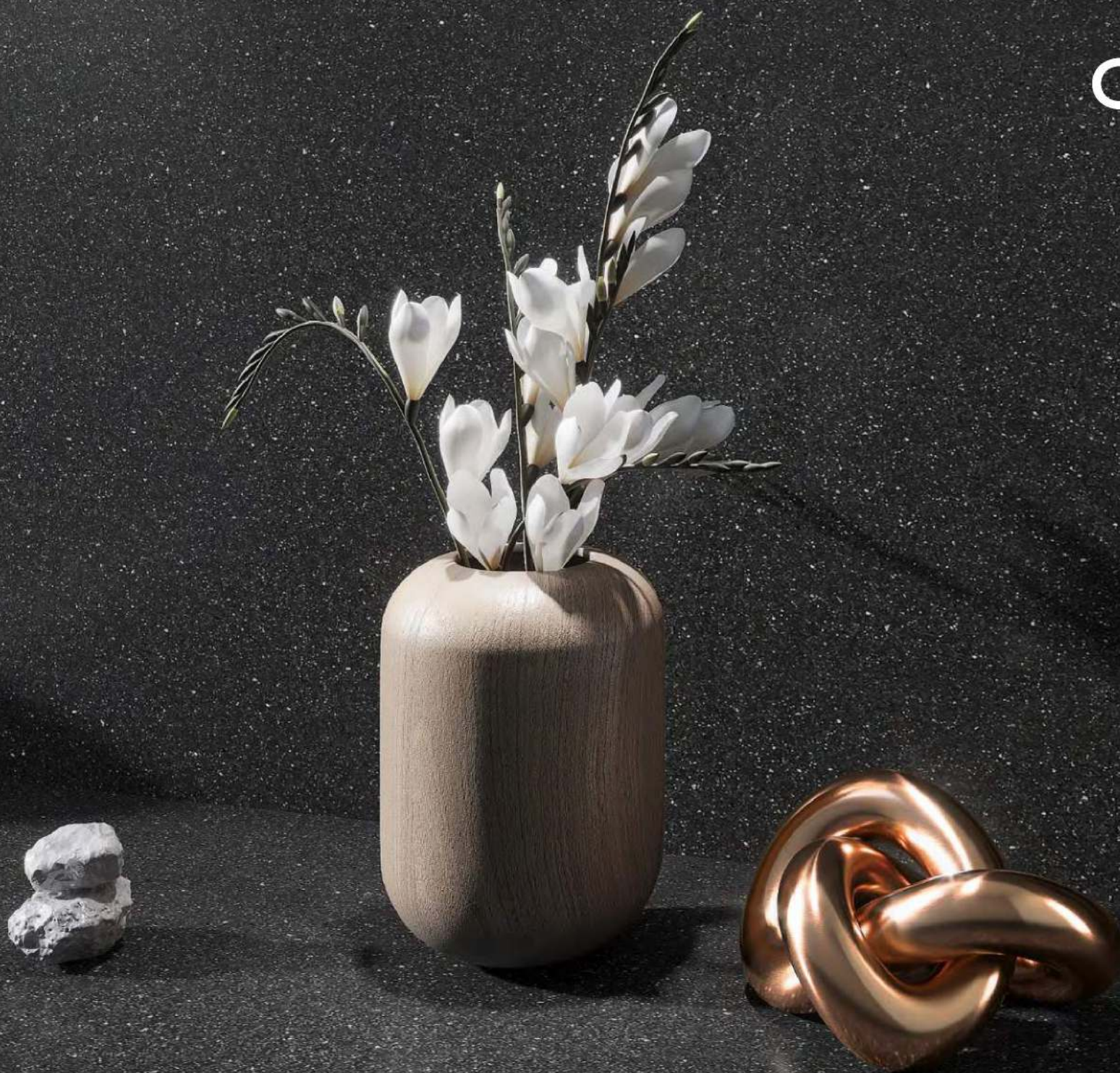
THEY ARE REFINED, CONTEMPORARY, AND BUILT TO PERFECTION. OUR DESIGNS ARE INTRICATELY MADE AND BEAR AN IMPERIAL CHARM TO THEM.



→ A NEW DIMENSION
TO YOUR SPACE.



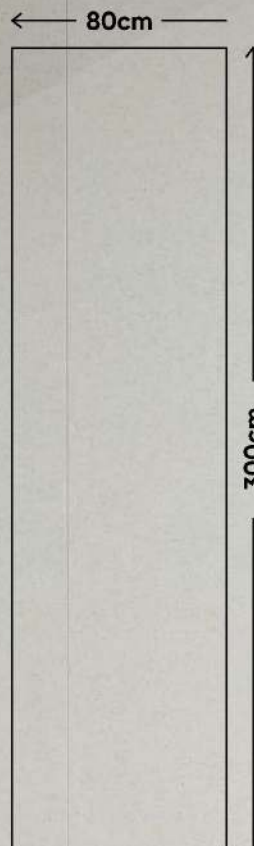
A MIX OF CONTEMPORARY AESTHETICS AND TIMELESS ELEGANCE



Glam Surface offers authentic and refined surfaces created by depositing porcelain stoneware flakes on the material. This technique produces a tangible and three-dimensional effect. The product comes in five colors: White, Nero, Crema, Choco, Charcoal, and Barly. It has a thickness of 15mm and two surface options: Gress Matt and Extra Gloss.



A NEW DIMENSION
TO YOUR SPACE.



Glam Surface is a contemporary and sustainable product that combines Earth and technology. It is a full-bodied technical material created by blending small fragments and pigments of different colors. The series offers six essential hues that harmonize with natural elements, providing easily matchable tones.

The collection is divided into two aesthetic families: Ground, with a neutral color palette, and Flakes, with six intense colors. The product's potential uses are further enhanced by the availability of new finishes, Comfort and Glossy Bright.

**DISTINCTIVE
PERSONALITIES**

A COMPLETE PRODUCT SYSTEM

A NEW DIMENSION
TO YOUR SPACE

1.  **FACADES**

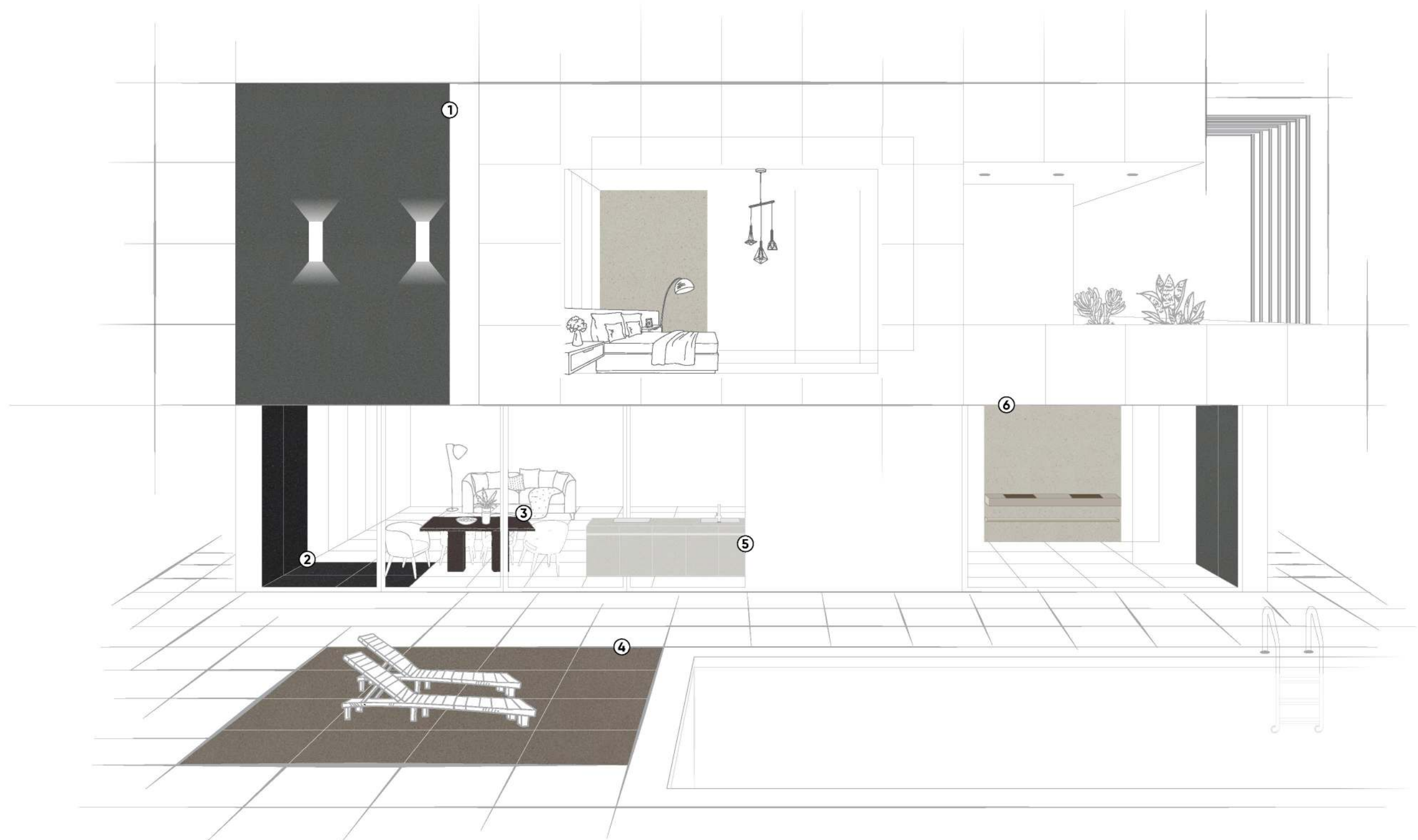
2.  **FLOOR & WALL**

3.  **FURNITURE**

4.  **OUTDOOR**

5.  **COUNTER TOPS**

6.  **SINKS**



ENVIRON- MENTAL SUSTAINA- BILITY

A NEW DIMENSION
TO YOUR SPACE.



EXTRA
SIZE



HEAT
RESISTANT



FROST
RESISTANT



SCRATCH
RESISTANT



ACID AND
ALKALI
RESISTANT



STAIN
RESISTANT



WATERPROOF
AND
NONPOROUS



HYGIENIC, MOLD
AND MILDEW
RESISTANT



LOW
MAINTENANCE



CHEMICAL
RESISTANT



6 COLOR

2 FINISH

GLAM BARLEY

GLAM CREMA

GLAM COCOA

GLAM CHARCOAL

GLAM WHITE

GLAM NERO



EXTRA
GLOSS

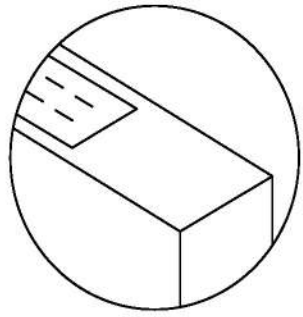
A graphic consisting of several small, four-pointed starburst shapes arranged in a cluster, representing a sparkling or glossy effect.

GLAM BARLEY

Actual Tile Photography

Note : We illuminate the tile with additional lighting to showcase a sparkling effect. Therefore, we kindly request you to assess the actual piece for precise color representation before making the final decision on the product.

→ A NEW DIMENSION TO YOUR SPACE.



GLAM BARLEY



ENHANCE THE BEAUTY OF
YOUR KITCHEN WITH THE EXQUISITE
CHARM OF OUR SLAB TILES,
CREATING A TRULY
STUNNING CULINARY SPACE.



FULLBODY
15MM

GRES
MATT
GM

EXTRA
GLOSS
✦ ✦ ✦

GLAM
BARLEY

800 X 3000 MM



Countertop & Platform
Glam Barley - Extra Gloss

→ A NEW DIMENSION TO YOUR SPACE.

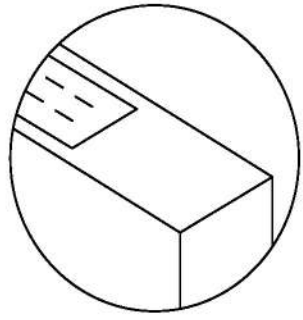
Note : We illuminate the tile with additional lighting to showcase a sparkling effect. Therefore, we kindly request you to assess the actual piece for precise color representation before making the final decision on the product.

EXTRA
GLOSS
✦ ✦ ✦

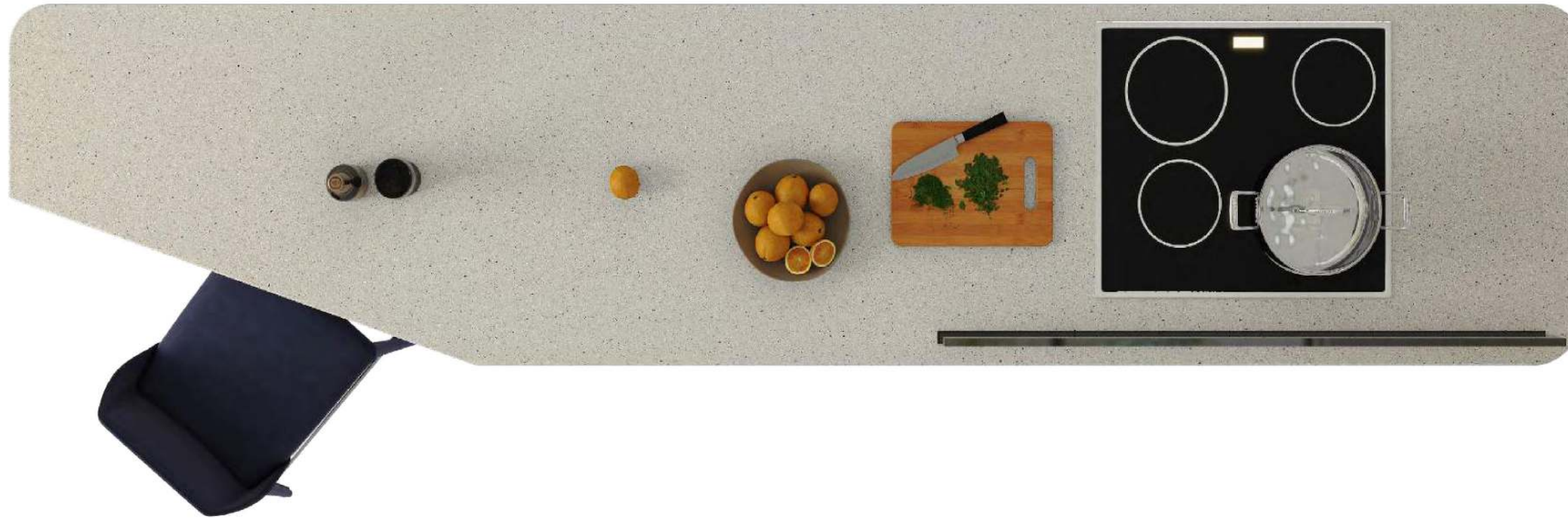
GRES
MATT
GM

GLAM
CREMA

Actual Tile Photography



GLAM CREMA



EVITALIZE YOUR BATHROOM
WITH THE EXQUISITE ELEGANCE OF
OUR SLAB TILES, CREATING
A STUNNING SPACE THAT EXUDES
BEAUTY AND LUXURY.



FULLBODY
15MM

GRES
MATT
GM

EXTRA
GLOSS
✦ ✦ ✦

GLAM
CREMA

800 X 3000 MM

→ A NEW DIMENSION TO YOUR SPACE.



Wall
Glam Crema - Gres Matt

Floor
Glam Crema - Gres Matt

Wash Basin
Glam Crema - Gres Matt



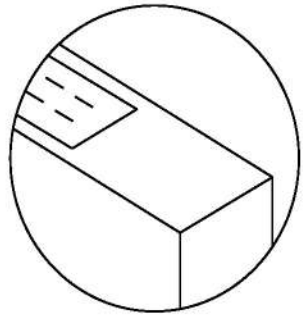
EXTRA
GLOSS

A graphic consisting of several small, white, four-pointed starburst or sparkle shapes arranged in a cluster.

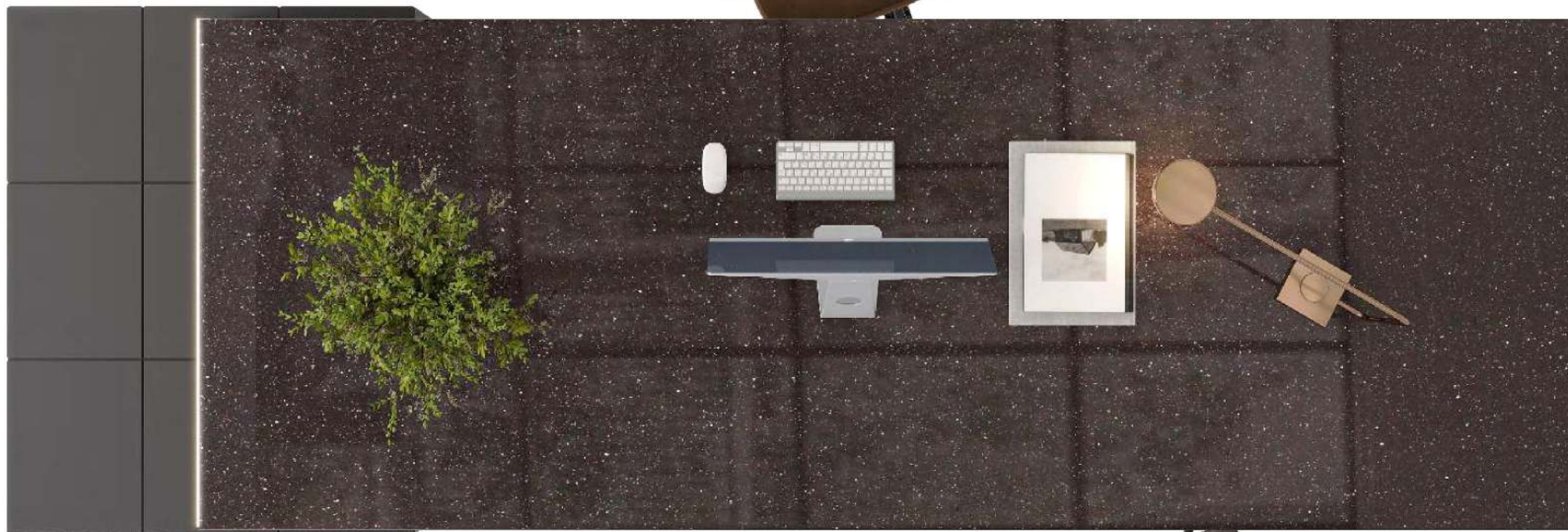
Note : We illuminate the tile with additional lighting to showcase a sparkling effect. Therefore, we kindly request you to assess the actual piece for precise color representation before making the final decision on the product.

GLAM
COCOA

Actual Tile Photography



GLAM COCOA



**ELEVATE YOUR WORKSPACE TO
NEW HEIGHTS OF BEAUTY
WITH OUR STUNNING TILES, INSPIRING
CREATIVITY AND SOPHISTICATION.**



FULLBODY
15MM

GRES
MATT
GM

EXTRA
GLOSS
✦ ✦ ✦

GLAM
COCOA

800 X 3000 MM



↑ A NEW DIMENSION TO YOUR SPACE.

Wall
Glam Cocoa - Gres Matt

Floor
Glam White - Gres Matt

Working Table & Window Seal
Glam Cocoa - Gres Matt

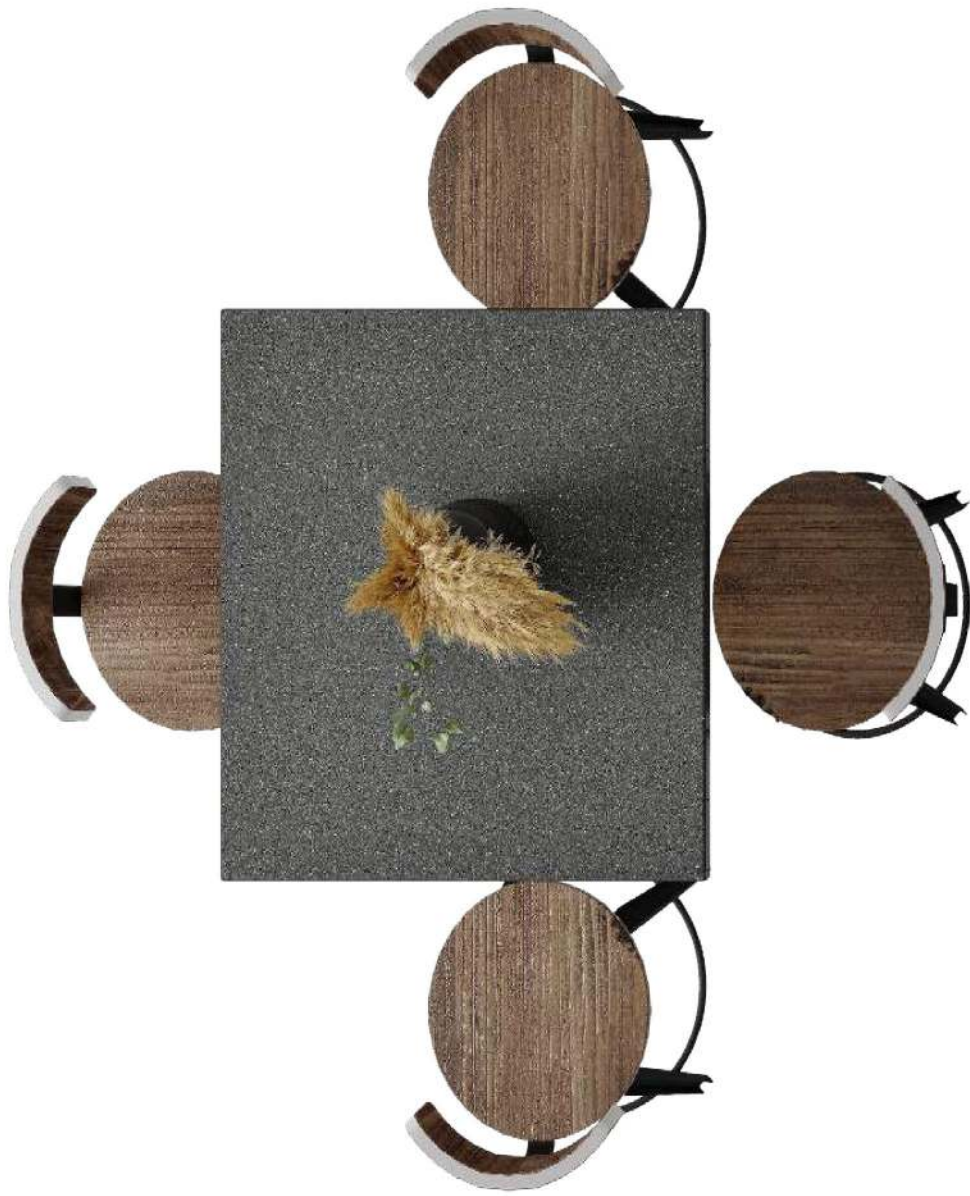
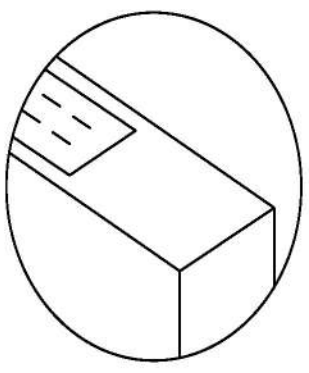
GRES
MATT
GM

EXTRA
GLOSS
✦ ✦ ✦

GLAM
CHARCOAL
Actual Tile Photography

Note : We illuminate the tile with additional lighting to showcase a sparkling effect. Therefore, we kindly request you to assess the actual piece for precise color representation before making the final decision on the product.

→ A NEW DIMENSION TO YOUR SPACE.



ENHANCE THE ALLURE OF YOUR
SHOWROOM WITH THE
EXQUISITE BEAUTY OF OUR TILES,
TRANSFORMING IT INTO A
CAPTIVATING SPACE.

FULLBODY
15MM

GRES
MATT
GM

EXTRA
GLOSS
✦ ✦ ✦

GLAM
CHARCOAL

800 X 3000 MM



A NEW DIMENSION TO YOUR SPACE.

Wall 1
Glam White - Gres Matt

Wall 2
Glam Charcoal - Extra Gloss

Floor
Glam Charcoal - Extra Gloss

Platform 1
Glam Charcoal - Extra Gloss

Platform 2
Glam White - Gres Matt

GRES
MATT
GM

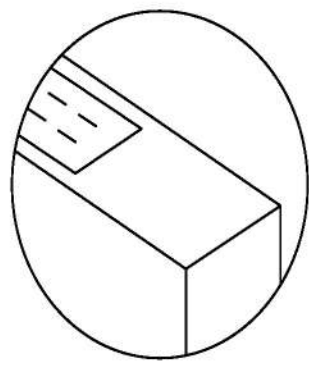
EXTRA
GLOSS
✦✦✦

GLAM
WHITE

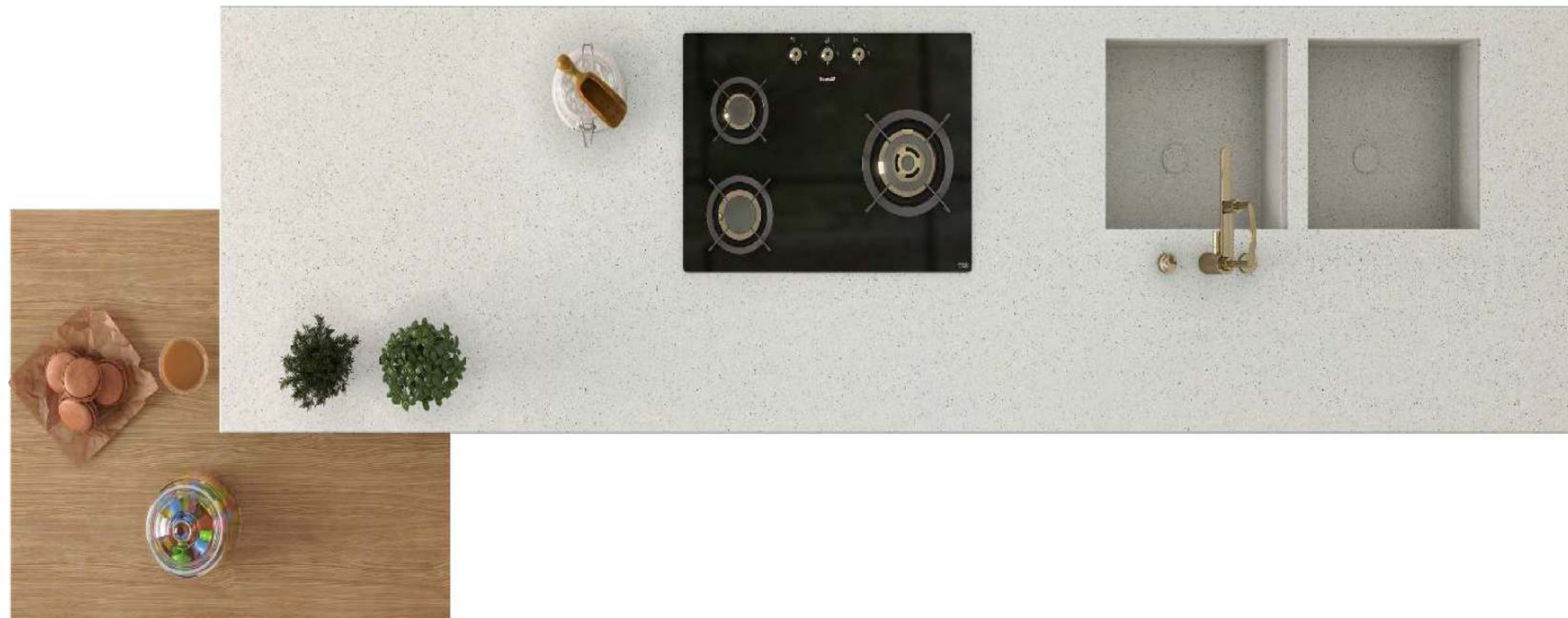
Actual Tile Photography

Note : We illuminate the tile with additional lighting to showcase a sparkling effect. Therefore, we kindly request you to assess the actual piece for precise color representation before making the final decision on the product.

→ A NEW DIMENSION TO YOUR SPACE.

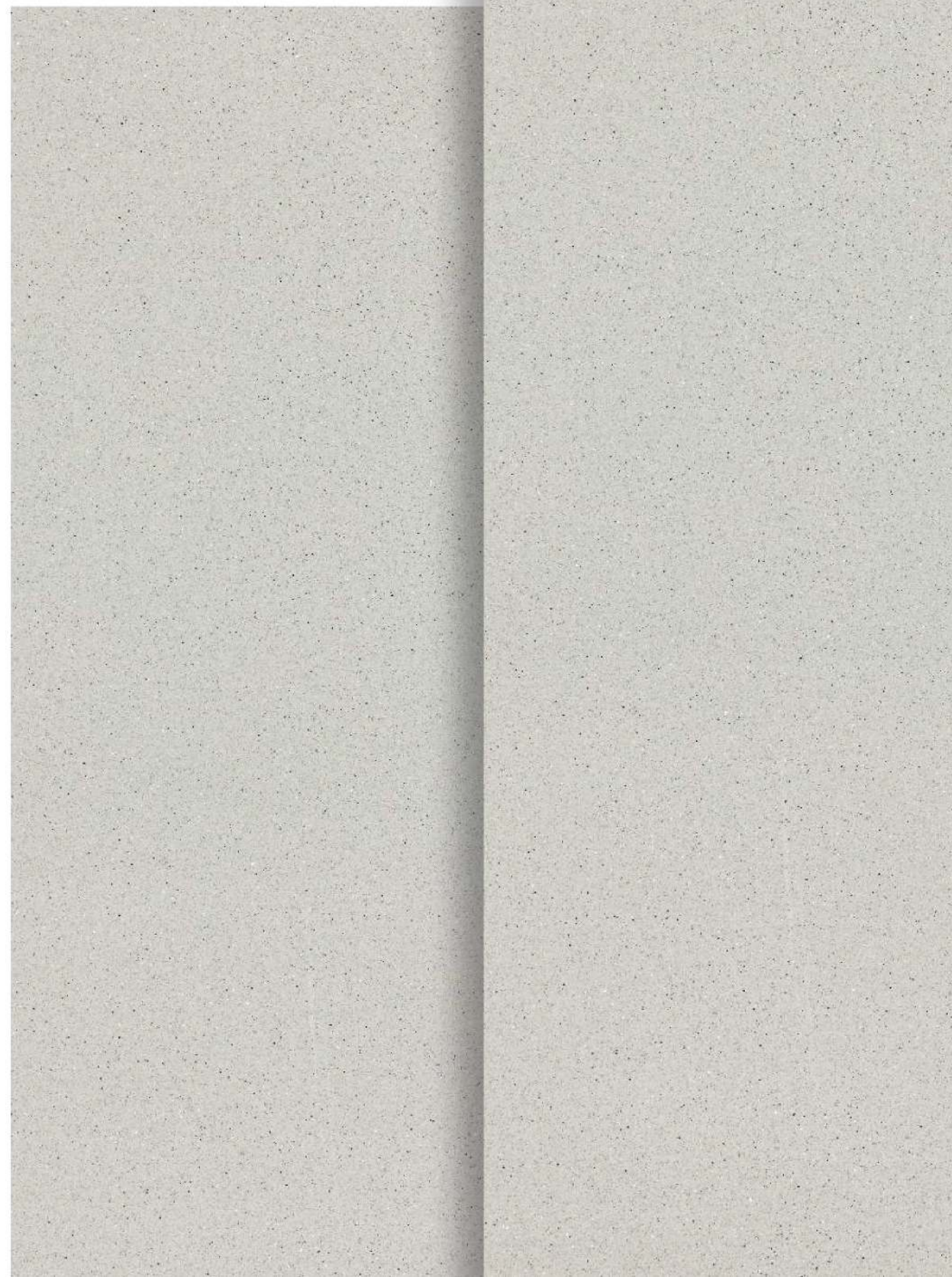


GLAM WHITE



**ELEVATE YOUR STAIRCASE TO A
WORK OF ART WITH THE
CAPTIVATING BEAUTY OF OUR
FULL-BODY TILES, ADDING A TOUCH OF
ELEGANCE TO YOUR SPACE.**

FULLBODY
15MM



GRES
MATT
GM

EXTRA
GLOSS
✦ ✦ ✦

GLAM
WHITE

800 X 3000 MM



A NEW DIMENSION TO YOUR SPACE. →

Floor
Glam White - Extra Gloss

Staircase
Glam White - Extra Gloss



EXTRA
GLOSS

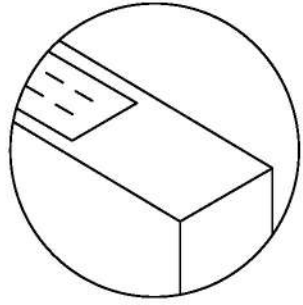
A series of five small, white, four-pointed starburst icons arranged in a cluster, representing a sparkling or glossy effect.

Note : We illuminate the tile with additional lighting to showcase a sparkling effect. Therefore, we kindly request you to assess the actual piece for precise color representation before making the final decision on the product.

GLAM
NERO

Actual Tile Photography





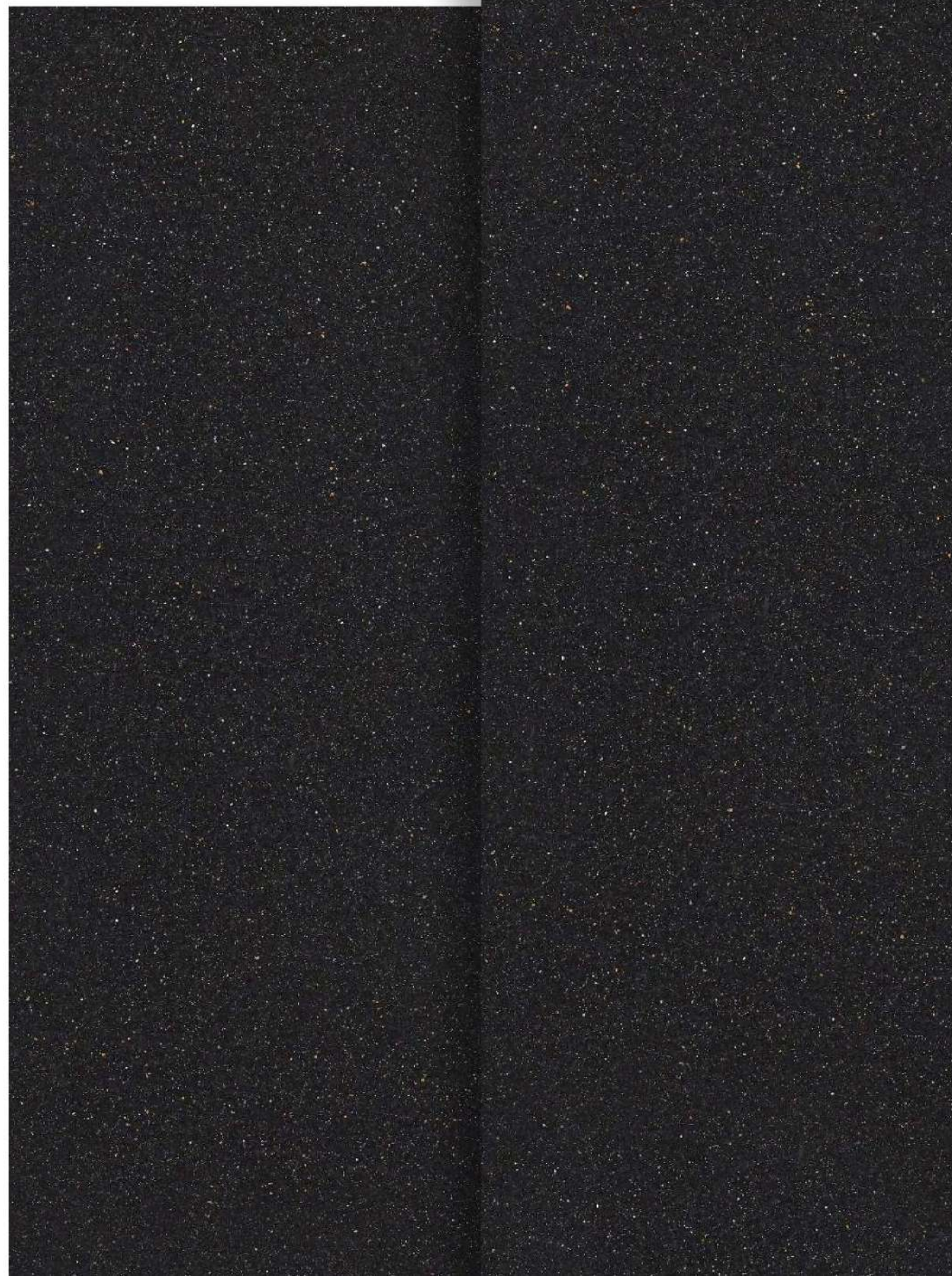
GLAM NERO



TRANSFORM YOUR KITCHEN
COUNTERTOP INTO A STUNNING
FOCAL POINT WITH THE
BREATHTAKING
BEAUTY OF OUR SLAB TILES.



FULLBODY
15MM



GRES
MATT
GM

EXTRA
GLOSS
✦ ✦ ✦



**GLAM
NERO**

800 X 3000 MM



A NEW DIMENSION TO YOUR SPACE.

Floor
Glam Crema - Gres Matt

Platform
Glam Nero - Extra Gloss

Window Seal
Glam Nero - Gres Matt

Cleaning & Maintenance

Our products are non porous (due to their high quality raw materials, stringent production parameters and state of the art technology), hence any dust or deposited waste cannot penetrate the surface.

For most cases only a damp cloth is sufficient for cleaning.

Regular cleaning highlights the aesthetic features of the surface and gives it exceptional shine.

For highly aggressive cleaning caused by some common food and substances follow the table below.

TYPE OF STAIN	CHEMICAL PRODUCT	EXAMPLE
Grease	Alkaline - Solvent	Detergent
Oil	Solvent	Ammonia, Backing Soda
Ink	Oxidant - Solvent	Alcohol, Liquid Bleach, Nail Paint Remover
Rust	Acid	Hydrochloric Acid, Vinegar, Red Harpic
Lime	Acid	Descaling Reagent, Hydro Chloric Acid
Cement	Acid	Hydro Chloric Acid
Wine	Alkaline	Ammonia, Liquid Bleach
Coffee	Alkaline - Solvent	Ammonia, Liquid Bleach
Rubber	Solvent	Alcohol, Thinner
Plaster	Acid	Hydro Chloric Acid
Candle Wax	Solvent	Alcohol, Thinner
Iodine	Oxidant	Liquid Bleach
Blood	Oxidant	Liquid Bleach
Ice Cream	Alkaline	Liquid Bleach

Note: It is recommended that any kind of stain needs to get clean immediately / as soon as possible.

TECHNICAL SPECIFICATION

CHARACTERISTIC	STANDARD AS PER ISO13006:2018/ EN14411 Gr.Bla	STANDARD AS PER IS15622:2017 Gr.Bla	MEAN VALUE OF VOLARK	TEST METHOD
Regulatory Properties				
Deviation in length and width	± 0.30 % (±1.00mm)	± 0.10 %	± 0.10 %	ISO 10545-2 & IS 13630-1
Deviation in thickness	± 5.00 % (±0.50mm)	± 5.00 %	± 4.00 %	ISO 10545-2 & IS 13630-1
Straightness in side	± 0.30 % (±0.80mm)	± 0.10 %	± 0.10 %	ISO 10545-2 & IS 13630-1
Rectangularity	± 0.30 % (±1.50mm)	± 0.10%	± 0.10 %	ISO 10545-2 & IS 13630-1
Surface flatness central curvature	± 0.40 % (±1.80mm)	± 0.50 %	± 0.20 %	ISO 10545-2 & IS 13630-1
Surface flatness edge curvature	± 0.40 % (±1.80mm)	± 0.50 %	± 0.20 %	ISO 10545-2 & IS 13630-1
Surface flatness warpage	± 0.40 % (±1.80mm)	± 0.50 %	± 0.10 %	ISO 10545-2 & IS 13630-1
Surface quality	> 95% defects free	> 95% defects free	> 95% defects free	ISO 10545-2 & IS 13630-1
Small color difference (for plain color)	ΔE < 0.75	N.A.	ΔE < 0.30	ISO 10545-16
Glossiness (with nano polished)	as per mfg.	as per mfg.	> 90°*	Glossmeter 60°
Glossiness (without polished)	as per mfg.	as per mfg.	3° < GLOSS < 7°	Glossmeter 60°
Glossiness (satin)	as per mfg.	as per mfg.	7° < GLOSS < 18°	Glossmeter 60°
Structural Properties				
Water absorption	≤ 0.50 %	≤ 0.080 %	≤ 0.060 %	ISO 10545-3 & IS 13630-2
Bulk density	as per mfg.	Min. 2.20 g/cc	> 2.28 gm/cc	DIN51082 & IS 13630-2
Massive Mechanical Properties				
Modulus of rupture	Min. 35.0 N/mm	Min. 35.0 N/mm	Min. 40.0 N/mm	ISO 10545-4 & IS 13630-6
Breaking strength thickness <7.5	Min. 700.0 N	Min. 700.0 N	Min. 1000.0 N	ISO 10545-4 & IS 13630-6
Breaking strength thickness ≥7.5	Min. 1300.0 N	Min. 1300.0 N	Min. 1800.0 N	ISO 10545-4 & IS 13630-6
Breaking strength thickness ≥7.5 (15mm)	Min. 1300.0 N	Min. 1300.0 N	Min. 5000.0 N	ISO 10545-4 & IS 13630-6
Surface Mechanical Properties				
MOH'S hardness	as per mfg.	Min. 5	Glossy - Min. 4 / Matt - Min. 6	BS EN 15771:2010
Deep abrasion resistance	Max. 175mm ⁻³	Max. 140mm ⁻³	Max. 132mm ⁻³	ISO 10545-6 & IS 13630-12
Thermal Hydrometric Properties				
Moisture expansion	Max. 0.06%(0.6mm/m)	Max. 0.02mm/m	Max. 0.02mm/m	ISO 10545-10 & IS 13630-3
Thermal expansion(COE) at 100°C	as per mfg.	Max. 6.0 x 10 ⁻⁶	Max. 6.0 x 10 ⁻⁶	ISO 10545-8 & IS 13630-4
Thermal shock resistance	Min. 10 Cycle	Min. 10 Cycle	Min. 10 Cycle	ISO 10545-9 & IS 13630-5
Impact resistance(COR)	Min. 0.55	Min. 0.55	Min. 0.55	ISO 10545-5 & IS 13630-14
Frost resistance	as per mfg.	as per mfg.	Frost Proof	ISO 10545-12 & IS 13630-10
Chemical Properties				
Resistance to staining glazed	Min. Class 3	Min. Class 2	Min. Class 4/Min. Class 2	ISO 10545-14 & IS 13630-8
Resistance to household chemicals & swimming pool salts glazed	Min. Class UB	as per mfg.	Min. Class UB/Min. Class A	ISO 10545-13 & IS 13630-8
Resistance to low concentrate acid and alkalis glazed	as per mfg.	as per mfg.	Min. Class ULB*/Min. Class A***	ISO 10545-13 & IS 13630-8
Resistance to high concentrate acid and alkalis glazed	as per mfg.	as per mfg.	Min. Class UHB*/Min. Class A***	ISO 10545-13 & IS 13630-8
Safety Properties				
Skid resistance(DCOF-DRY)##	as per mfg.	as per mfg.	Polished - < 0.30 / Matt - > 0.40	ANSI/NFSI B101.3-2012
Slip resistance(DCOF)(R value)##	as per mfg.	as per mfg.	R9 to R13	DIN 51130
Fire resistance	as per mfg.	N.A.	Fire Proof	N.A.

* Glossiness 90% with nano technology
** Except Hydrofluoric Acid & it's compound
Unglazed tiles Intended for use on floor
As per customer requirement

Packing Details

SIZE	ACTULE SIZE	THICKNESS	TILES / BOX	WEIGHT / BOX	COVERAGE AREA / BOX
80x300cm	800x3000mm	15mm	1pc	83 kg (Approx)	25.83 Sq ft 2.40 Sq m

