

**volark**  
TILES

**FULLBODY**  
15MM

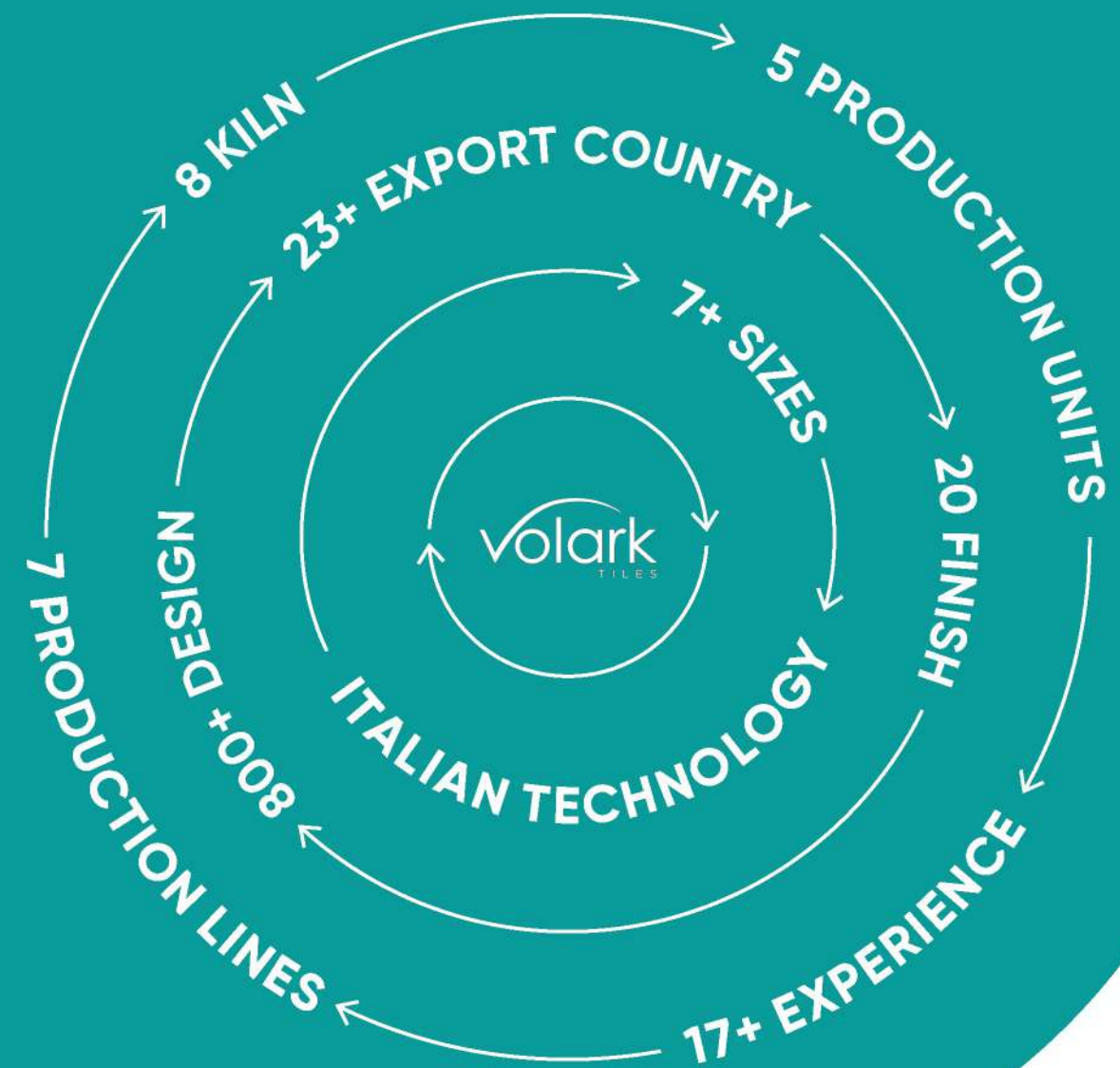
→ 120x320 CM



**FEEL THE ARTS  
EXPRESSION  
OF ARCHITECTURE**

A NEW DIMENSION  
TO YOUR SPACE

FROM THE  
BEGINNING  
TO  
THE FUTURE



# MOVE ON DISCOVERY

AT VOLARK, WE DESIGN PRODUCTS THAT SET FORTH EXAMPLES OF SHEER CREATIVITY, PASSION, AND AN IMMENSE AMOUNT OF HARD WORK.

INCORPORATING ADVANCED TECHNOLOGY AND HIGH-QUALITY MATERIAL INTO OUR ENTIRE PRODUCT IS WHAT MAKES US THE LEADERS IN THE CERAMIC INDUSTRY. ALL OF OUR DESIGNS ARE MADE TO SUIT THE AESTHETIC OF YOUR SPACE.

THEY ARE REFINED, CONTEMPORARY, AND BUILT TO PERFECTION. OUR DESIGNS ARE INTRICATELY MADE AND BEAR AN IMPERIAL CHARM TO THEM.

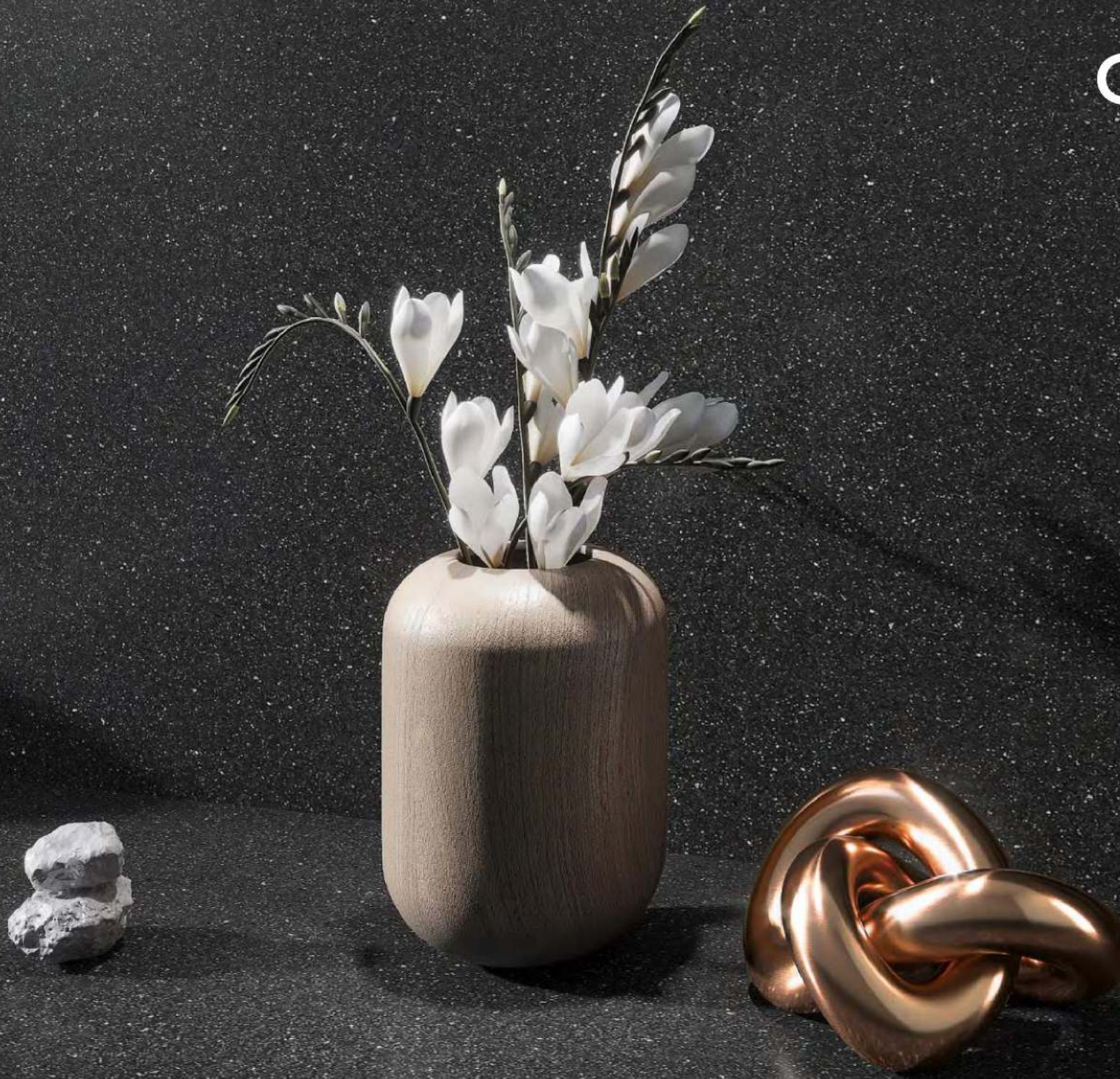


A NEW DIMENSION  
TO YOUR SPACE.



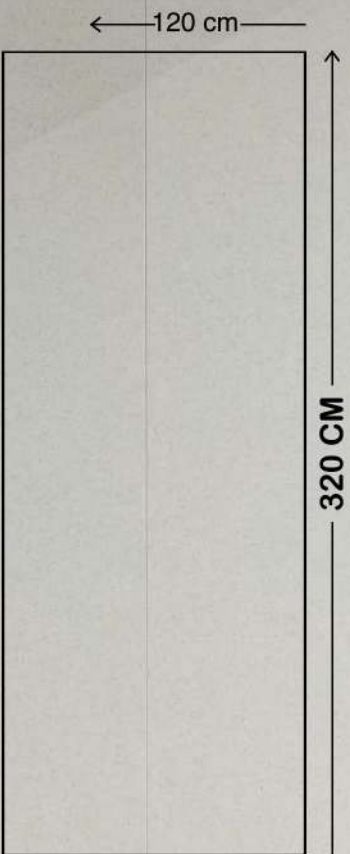
A NEW DIMENSION  
TO YOUR SPACE. →

A MIX OF  
CONTEMPORARY  
AESTHETICS  
AND TIMELESS  
ELEGANCE





A NEW DIMENSION TO YOUR SPACE.



**DISTINCTIVE  
PERSONALITIES**

# A COMPLETE PRODUCT SYSTEM

A NEW DIMENSION TO YOUR SPACE

1.  **FACADES**

2.  **FLOOR & WALL**

3.  **FURNITURE**

4.  **OUTDOOR**

5.  **COUNTER TOPS**

6.  **SINKS**



# ENVIRONMENTAL SUSTAINABILITY



A NEW DIMENSION  
TO YOUR SPACE.



EXTRA  
SIZE



HEAT  
RESISTANT



FROST  
RESISTANT



SCRATCH  
RESISTANT



ACID AND  
ALKALI  
RESISTANT



STAIN  
RESISTANT



WATERPROOF  
AND  
NONPOROUS



HYGIENIC, MOLD  
AND MILDEW  
RESISTANT



LOW  
MAINTENANCE



CHEMICAL  
RESISTANT

4 COLOR

2 FINISH



A NEW DIMENSION TO YOUR SPACE.

MARQUINA

ROMA WHITE

PIETRA GREY

CAPRICE BORGATA

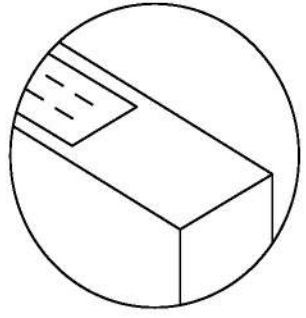


↑ A NEW DIMENSION  
TO YOUR SPACE.

Note: We illuminate the tile with additional lighting to showcase a sparkling effect. Therefore, we kindly request you to assess the actual piece for precise color representation before making the final decision on the product.

EXTRA  
GLOSS  
✦ ✦ ✦ ✦

MARQUINA



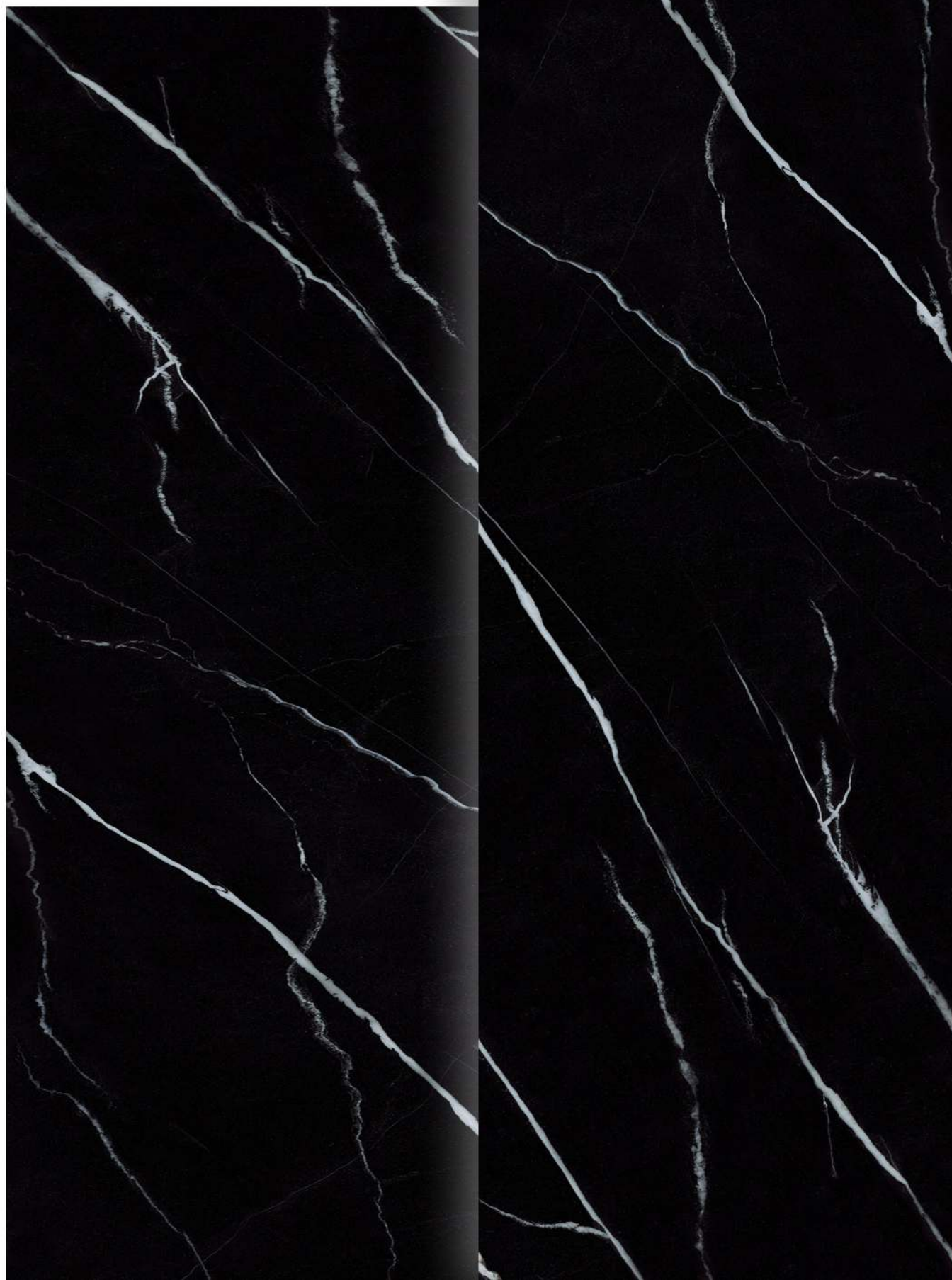
MARQUINA



**ENHANCE THE BEAUTY OF  
YOUR KITCHEN WITH THE EXQUISITE  
CHARM OF OUR SLAB TILES,  
CREATING A TRULY  
STUNNING CULINARY SPACE.**



**FULLBODY**  
15MM



---

EXTRA  
GLOSS

---



MARQUINA



---

1200 x 3200 MM

---

A NEW DIMENSION TO YOUR SPACE.



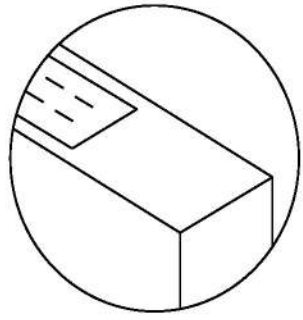
A NEW DIMENSION TO YOUR SPACE

With the illuminating effect of soft ambient lighting to showcase a sparkling effect. Therefore, we kindly request you to reserve the actual place for product color representation before making a final decision on the product.



**EXTRA  
GLOSS**  
✦ ✦ ✦ ✦

**ROMA WHITE**



# ROMA WHITE



**ELEVATE YOUR WORKSPACE TO  
NEW HEIGHTS OF BEAUTY  
WITH OUR STUNNING TILES, INSPIRING  
CREATIVITY AND SOPHISTICATION.**



**FULLBODY**  
15MM



---

**EXTRA  
GLOSS**



---



**ROMA WHITE**



---

1200 x 3200 MM

---

A NEW DIMENSION TO YOUR SPACE.



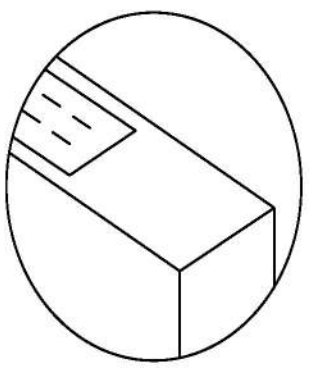




# PIETRA GREY

Note: We illuminate the tile with additional lighting to showcase a sparkling effect. Therefore, we kindly request you to assess the actual piece for precise color representation before making the final decision on the product.





# PIETRA GREY



**ENHANCE THE ALLURE OF YOUR  
SHOWROOM WITH THE  
EXQUISITE BEAUTY OF OUR TILES,  
TRANSFORMING IT INTO A  
CAPTIVATING SPACE.**



**FULLBODY**  
15MM



**PIETRA GREY**



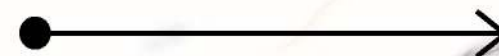
---

1200 x 3200 MM

---

A NEW DIMENSION TO YOUR SPACE.

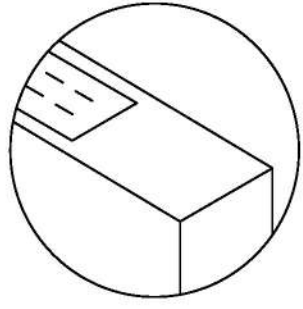




Note: We illuminate the tile with additional lighting to showcase a sparkling effect. Therefore, we kindly request you to assess the actual piece for precise color representation before making the final decision on the product.

# CAPRICE BORGATA





# CAPRICE BORGATA



**TRANSFORM YOUR KITCHEN  
COUNTERTOP INTO A STUNNING  
FOCAL POINT WITH THE  
BREATHTAKING  
BEAUTY OF OUR SLAB TILES.**



**FULLBODY**  
15MM



---

**GRES  
MATT**  


---



**CAPRICE BORGATA**



---

1200 x 3200 MM

---

A NEW DIMENSION TO YOUR SPACE.





## Cleaning & Maintenance

Our products are non porous (due to their high quality raw materials, stringent production parameters and state of the art technology), hence any dust or deposited waste cannot penetrate the surface.

For most cases only a damp cloth is sufficient for cleaning.

Regular cleaning highlights the aesthetic features of the surface and gives it exceptional shine.

For highly aggressive cleaning caused by some common food and substances follow the table below.

TYPE OF STAIN	CHEMICAL PRODUCT	EXAMPLE
Grease	Alkaline - Solvent	Detergent
Oil	Solvent	Ammonia, Baking Soda
Ink	Oxidant - Solvent	Alcohol, Liquid Bleach, Nail Paint Remover
Rust	Acid	Hydrochloric Acid, Vinegar, Red Harpic
Lime	Acid	Descaling Reagent, Hydro Chloric Acid
Cement	Acid	Hydro Chloric Acid
Wine	Alkaline	Ammonia, Liquid Bleach
Coffee	Alkaline - Solvent	Ammonia, Liquid Bleach
Rubber	Solvent	Alcohol, Thinner
Plaster	Acid	Hydro Chloric Acid
Candle Wax	Solvent	Alcohol, Thinner
Iodine	Oxidant	Liquid Bleach
Blood	Oxidant	Liquid Bleach
Ice Cream	Alkaline	Liquid Bleach

**Note: It is recommended that any kind of stain needs to get clean immediately / as soon as possible.**

## TECHNICAL SPECIFICATION

CHARACTERISTIC	STANDARD AS PER ISO13006:2018/EN14411 Gr.BIa	STANDARD AS PER IS15622:2017 Gr.BIa	MEAN VALUE OF VOLARK	TEST METHOD
<b>Regulatory Properties</b>				
Deviation in length and width	± 0.30 % (±1.00mm)	± 0.10 %	± 0.10 %	ISO 10545-2 & IS 13630-1
Deviation in thickness	± 5.00 % (±0.50mm)	± 5.00 %	± 4.00 %	ISO 10545-2 & IS 13630-1
Straightness in side	± 0.30 % (±0.80mm)	± 0.10 %	± 0.10 %	ISO 10545-2 & IS 13630-1
Rectangularity	± 0.30 % (±1.50mm)	± 0.10%	± 0.10 %	ISO 10545-2 & IS 13630-1
Surface flatness central curvature	± 0.40 % (±1.80mm)	± 0.50 %	± 0.20 %	ISO 10545-2 & IS 13630-1
Surface flatness edge curvature	± 0.40 % (±1.80mm)	± 0.50 %	± 0.20 %	ISO 10545-2 & IS 13630-1
Surface flatness warpage	± 0.40 % (±1.80mm)	± 0.50 %	± 0.10 %	ISO 10545-2 & IS 13630-1
Surface quality	> 95% defects free	> 95% defects free	> 95% defects free	ISO 10545-2 & IS 13630-1
Small color difference (for plain color)	ΔE < 0.75	N.A.	ΔE < 0.30	ISO 10545-16
Glossiness (with nano polished)	as per mfg.	as per mfg.	> 90°*	Glossmeter 60°
Glossiness (without polished)	as per mfg.	as per mfg.	3° < GLOSS < 7°	Glossmeter 60°
Glossiness (satin)	as per mfg.	as per mfg.	7° < GLOSS < 18°	Glossmeter 60°
<b>Structural Properties</b>				
Water absorption	≤ 0.50 %	≤ 0.080 %	≤ 0.060 %	ISO 10545-3 & IS 13630-2
Bulk density	as per mfg.	Min. 2.20 g/cc	> 2.28 gm/cc	DIN51082 & IS 13630-2
<b>Massive Mechanical Properties</b>				
Modulus of rupture	Min. 35.0 N/mm	Min. 35.0 N/mm	Min. 40.0 N/mm	ISO 10545-4 & IS 13630-6
Breaking strength thickness <7.5	Min. 700.0 N	Min. 700.0 N	Min. 1000.0 N	ISO 10545-4 & IS 13630-6
Breaking strength thickness ≥7.5	Min. 1300.0 N	Min. 1300.0 N	Min. 1800.0 N	ISO 10545-4 & IS 13630-6
Breaking strength thickness ≥7.5 (15mm)	Min. 1300.0 N	Min. 1300.0 N	Min. 5000.0 N	ISO 10545-4 & IS 13630-6
<b>Surface Mechanical Properties</b>				
MOH'S hardness	as per mfg.	Min. 5	Glossy - Min. 4 / Matt - Min. 6	BS EN 15771:2010
Deep abrasion resistance	Max. 175mm <sup>3</sup>	Max. 140mm <sup>3</sup>	Max. 132mm <sup>3</sup>	ISO 10545-6 & IS 13630-12
<b>Thermal Hydrometric Properties</b>				
Moisture expansion	Max. 0.06%(0.6mm/m)	Max. 0.02mm/m	Max. 0.02mm/m	ISO 10545-10 & IS 13630-3
Thermal expansion(COE) at 100°C	as per mfg.	Max. 6.0 x 10 <sup>-6</sup>	Max. 6.0 x 10 <sup>-6</sup>	ISO 10545-8 & IS 13630-4
Thermal shock resistance	Min. 10 Cycle	Min. 10 Cycle	Min. 10 Cycle	ISO 10545-9 & IS 13630-5
Impact resistance(COR)	Min. 0.55	Min. 0.55	Min. 0.55	ISO 10545-5 & IS 13630-14
Frost resistance	as per mfg.	as per mfg.	Frost Proof	ISO 10545-12 & IS 13630-10
<b>Chemical Properties</b>				
Resistance to staining glazed	Min. Class 3	Min. Class 2	Min. Class 4/Min. Class 2	ISO 10545-14 & IS 13630-8
Resistance to household chemicals & swimming pool salts glazed	Min. Class UB	as per mfg.	Min. Class UB/Min. Class A	ISO 10545-13 & IS 13630-8
**Resistance to low concentrate acid and alkalis glazed	as per mfg.	as per mfg.	Min. Class ULB***/Min. Class A***	ISO 10545-13 & IS 13630-8
**Resistance to high concentrate acid and alkalis glazed	as per mfg.	as per mfg.	Min. Class UHB***/Min. Class A***	ISO 10545-13 & IS 13630-8
<b>Safety Properties</b>				
Skid resistance(DCOF-DRY)##	as per mfg.	as per mfg.	Polished - < 0.30 / Matt - > 0.40	ANSI/NFSI B101.3-2012
Slip resistance(DCOF)( R value )##	as per mfg.	as per mfg.	R9 to R13	DIN 51130
Fire resistance	as per mfg.	N.A.	Fire Proof	N.A.

\* Glossiness 90% with nano technology  
 \*\* Except Hydrofluoric Acid & it's compound  
 # Unglazed tiles Intended for use on floor  
 ## As per customer requirement

### PACKING DETAIL

SIZE	THICKNESS	NO. OF SLAB/BOX	WEIGHT/BOX	COVERAGE AREA
120x320 cm	1.5 cm	1 Pcs.	135 kg approx	3.84 sq meter

The logo for Volark Tiles features the word "volark" in a teal, lowercase, sans-serif font. A teal arc curves over the top of the letters "o", "l", and "a". Below "volark", the word "TILES" is written in a smaller, teal, uppercase, sans-serif font.

volark  
TILES