



STEP

READY TO INSTALL FULLBODY STEPS

ONE SURFACE, MANY POSSIBILITIES
**HOUSE OF FULL BODY
VITRIFIED TILES**

volark
FULL BODY TILES

ONE SURFACE, MANY POSSIBILITIES



300x1200 mm STEP | 150x1200mm RISER

STEP

READY TO INSTALL FULLBODY STEPS

**READY TO
INSTALL
STEP
AND
RISER**

volark

Highly durable, ideal for heavy traffic and commercial areas indoors and outdoors.

Easy and speedy installation. Better than natural stone cutting and finishing on site.

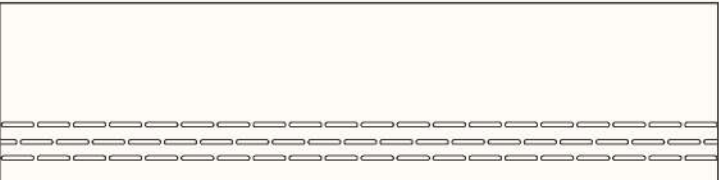
Embossed capsule lines provide extra grip for enhanced safety near the step edge and unique full bull nose edges.

It provides higher strength and durability and offers assurance to replace natural stones in a confident way with the highest abrasion resistance.

Ensures ten times superior surface protection against wear and tear over natural stones.

Available in 6 beautiful Salt & Pepper shades to suit building theme, decor, and desired contrast.

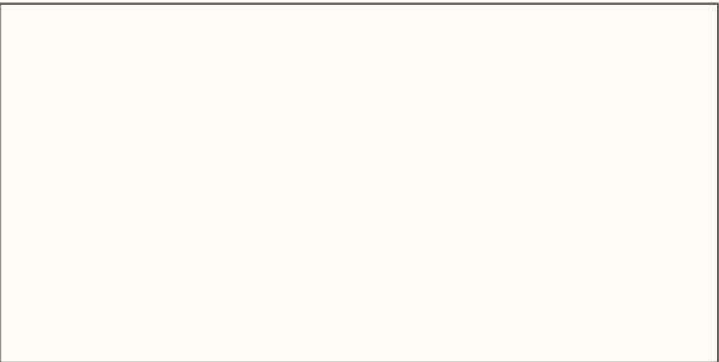
Available Sizes :



Step 300x1200mm



Riser 150x1200mm



Landing Tile Area 600x1200mm



Self Embossed Lines



Anti-Skid Surface



Bull Nose Finish



15MM Thickness



Water Absorption <0.05%



Easy Laying

READY TO INSTALL FULL BODY STEPS

SELF EMBOSSED GROVES

Provides Better Grip

BULL NOSE FINISH

Prevent Injuries From Sharp Edges

ANTI SKID PROPERTY

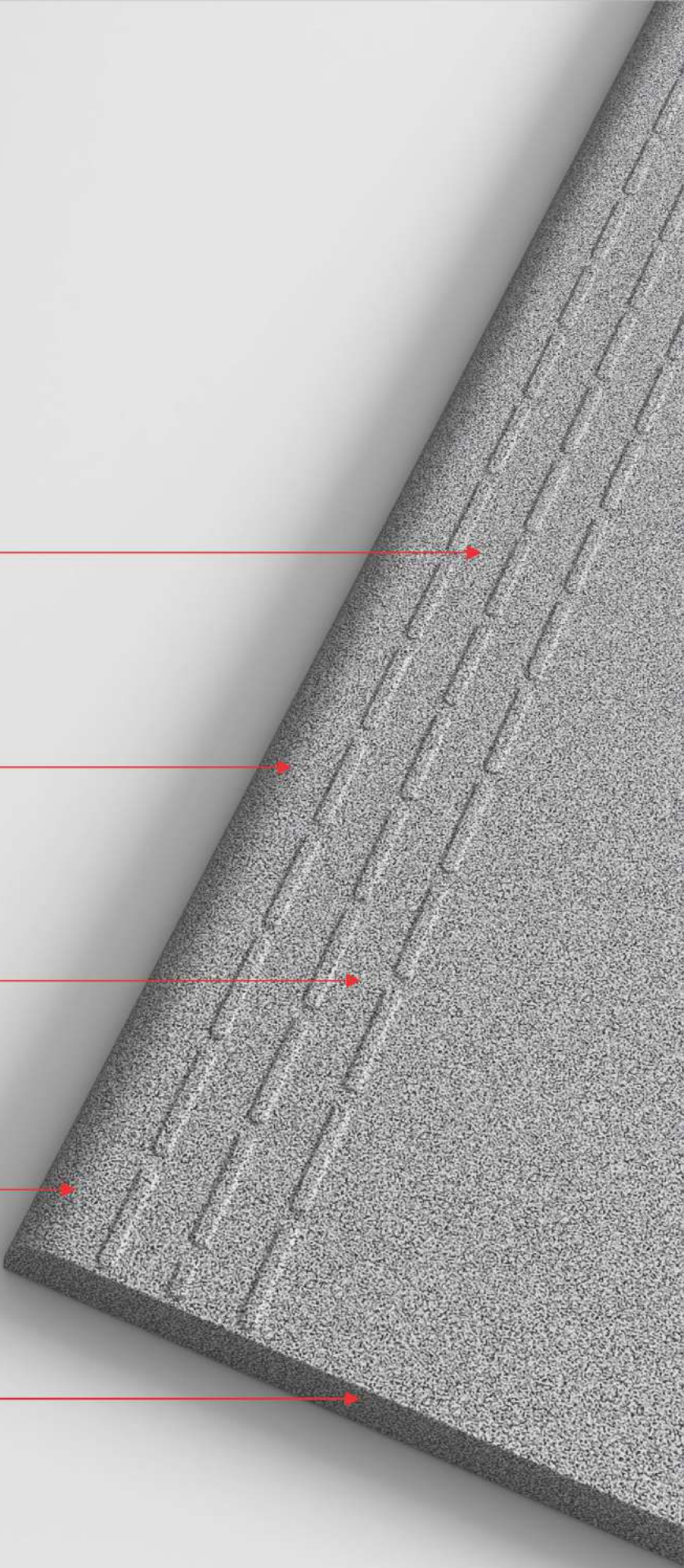
Coefficient Of Friction

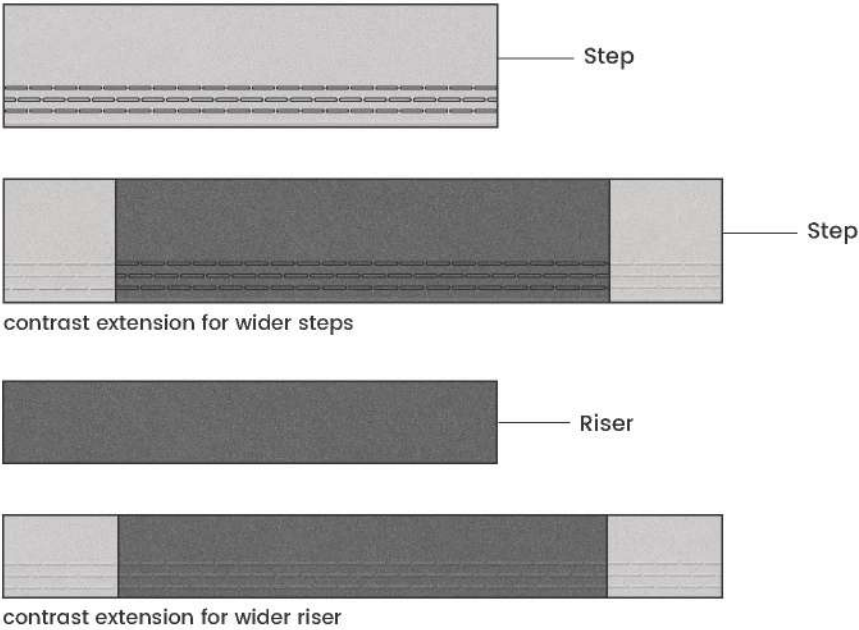
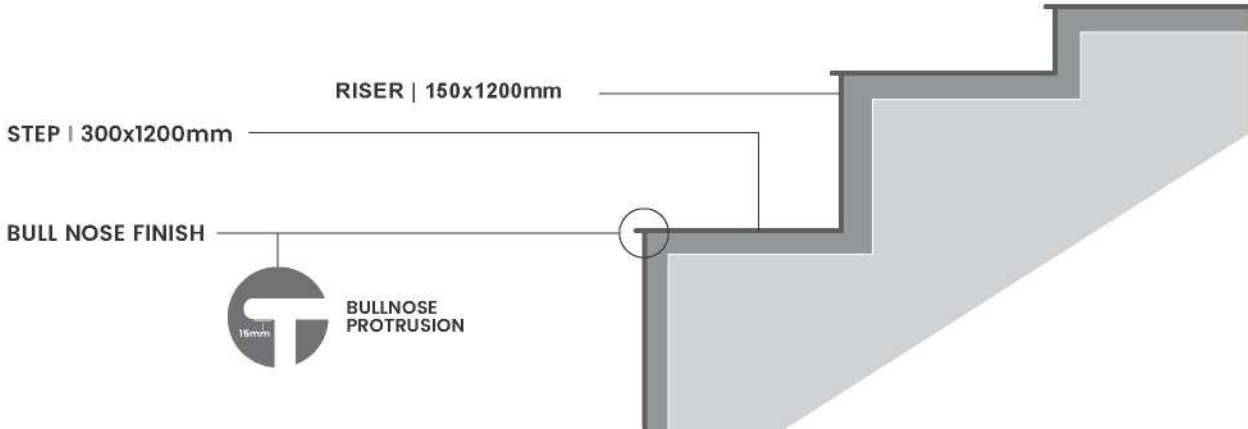
FULL BODY VITRIFIED TILES

Homogeneous Body

THICK BODY

Thickness 15mm (Step & Riser)





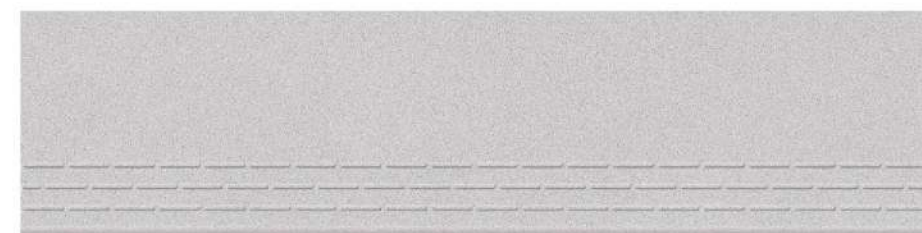
GRANITE	VOLARK STEP
Variation in shades, color & density	No color or density variation
Has to cut in sizes	Ready to lay tiles
Bull-nosing, half nosing needs to be done	Ready bull nose
Longer installation time	Easy to install
High Cost	Lower cost than granite
Affected by weather, hot & cold	Impervious to weather
High maintenance	Zero maintenance
Cut & grooves need to be done	Ready embossed grooves



STEP & RISER



CATEGORY : LIGHT



Step Cemento

300x1200mm



Riser Cemento

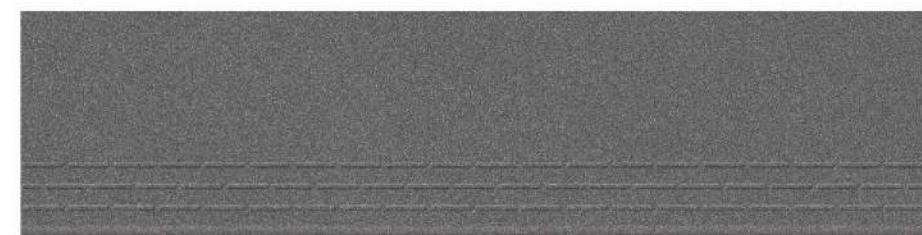
150x1200mm



STEP & RISER



CATEGORY : DARK



Step Coal

300x1200mm



Riser Coal

150x1200mm



STEP & RISER



CATEGORY : DARK



Step Gesso

300x1200mm



Riser Gesso

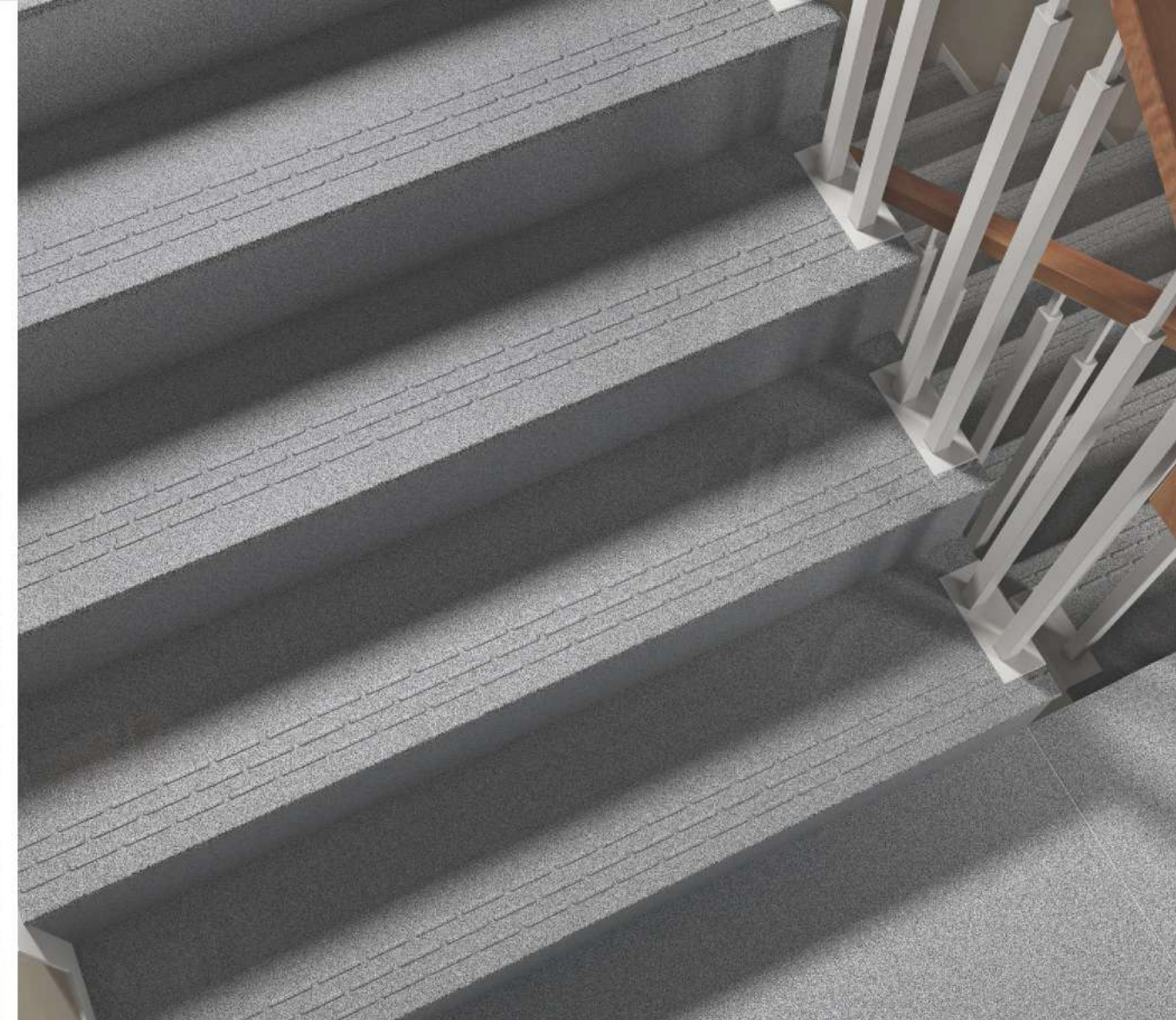
150x1200mm



DESERT COAL



STEP & RISER



CATEGORY : LIGHT



Step Granite

300x1200mm



Riser Granite

150x1200mm



STEP & RISER



CATEGORY : LIGHT



Step Lux

300x1200mm



Riser Lux

150x1200mm



STEP & RISER



CATEGORY : DARK



Step Star Black

300x1200mm



Riser Star Black

150x1200mm



READY TO INSTALL FULLBODY STEPS

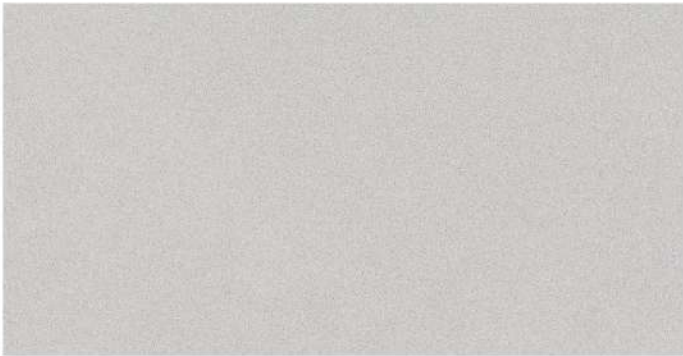
Matching Landing Area Tiles With Steps & Riser
300x1200mm | 200x1200mm | 600x1200mm



Step Cemento 300x1200mm



Riser Cemento 150x1200mm



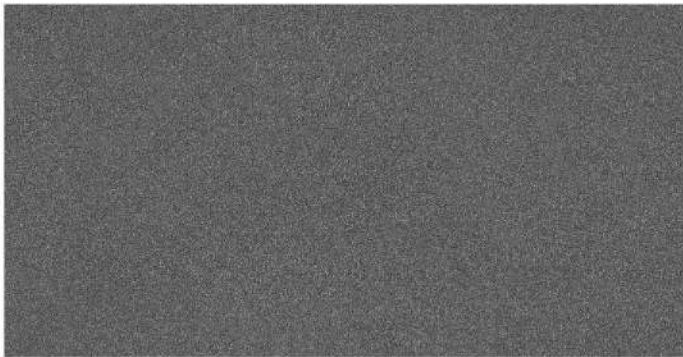
Desert Cemento 600x1200mm



Step Coal 300x1200mm



Riser Coal 150x1200mm



Desert Coal 600x1200mm



Step Gesso 300x1200mm



Riser Gesso 150x1200mm



Desert Gesso 600x1200mm



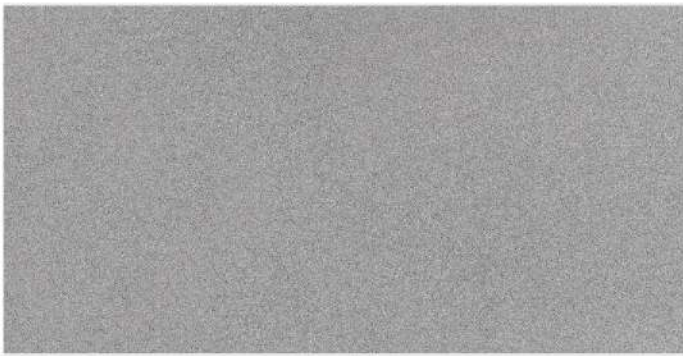
(*600x1200mm Available in 9mm & 15mm Thickness)



Step Granite 300x1200mm



Riser Granite 150x1200mm



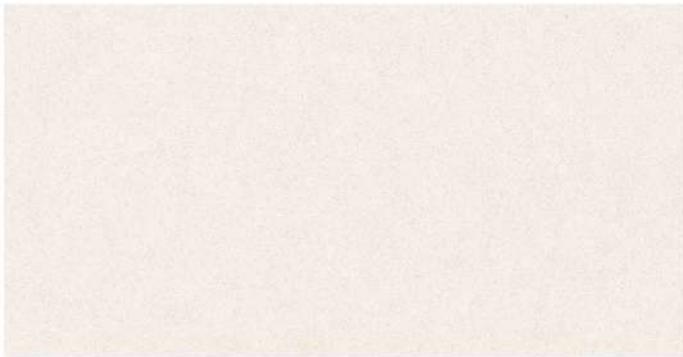
Desert Granite 600x1200mm



Step Lux 300x1200mm



Riser Lux 150x1200mm



Desert Lux 600x1200mm



Step Star Black 300x1200mm



Riser Star Black 150x1200mm



Deck Star Black 600x1200mm

APPLICATION AREAS



INDOOR



OUTDOOR



SWIMMING POOL



FIRE EXIT



UNIVERSITY



HOSPITAL



SHOPPING MALL

Recommended stair step dimensions
as per national building code , BIS, SP : 7

Types of Building	Minimum Width	Minimum Thread	Minimum Riser
Residential Buildings	1000mm	250mm	190mm
Residential hotel buildings	1500mm	300mm	150mm
Assembly buildings like auditoriums, theatres and cinemas	2000mm	300mm	150mm
Educational building	1500mm	300mm	150mm
Institutional building	2000mm	300mm	150mm
All other buildings	1500mm	300mm	150mm
2 storeyed – LIC urban areas	600mm	225 mm	200 mm
3 or more storeyed – LIC Urban Areas	750mm	250mm	200mm

Note: Straight flights of steps are preferred by ambulant disabled people. Steps should be of a consistent height and depth throughout the staircase. Stairs shall be constructed of non-combustible materials throughout.

TECHNICAL SPECIFICATION – FULL BODY VITRIFIED TILES

S. NO.	CHARACTERISTIC	INTERNATIONAL STANDARDS GROUP BIA- ISO 13006 ANN. G.	MEAN VALUE OF VOLARK	TEST METHOD
Dimensions & Surface Quality				
1.	Deviation in length and width	± 0.6%	± 0.1%	ISO 10545:2
2.	Deviation in thickness	±5%	± 4%	ISO 10545:2
3.	Deviation in Straightness of sides	± 0.5%	± 0.1%	ISO 10545:2
4.	Deviation in Rectangularity	± 0.6%	± 0.1%	ISO 10545:2
5.	Deviation in Surface Flatness	± 0.5%	± 0.2%	ISO 10545:2
6.	Surface Quality (%)	Minimum 95%	No visible defects	ISO 10545:2
Dimensions & Surface Quality				
7.	Scratch Hardness of surface Moh's scale	Min. 6	Min. 6	ISO 10545:3
8.	Water absorption	≤ 0.5%	≤ 0.05%	ISO 10545:3
9.	Moisture Expansion	Nil	Nil	ISO 10545:10
10.	Surface Abrasion Resistance	max 175mm®	≤ 144mm2	ISO 10545:7
Dimensions & Surface Quality				
11.	Breaking strength	< 1300 n	< 2200 n	ISO 10545:4
12.	Modulus of rupture	≥ 35 N/mm²	≥ 35 N/mm²	ISO 10545:4
13.	Impact resistance	Declared by manufacturer	no indentation or cracking	ISO 10545:5
Safety characteristics density				
14.	Density	2.20 gm/cc	2.34 gm/cc	DIN 51082
15.	Skid resistance	-	More than R10 (60x60cm x 9.7mm)	DIN 51130
Thermal Photo Characteristics				
16.	Thermal shock resistance	Resistant to 10 cycles	Pass min 10 cycles	ISO 10545:9
17.	Co efficient of thermal expansion	9x10 ⁻⁶ K ⁻¹ Max	<6x10 ⁻⁶ K ⁻¹ Max	ISO 10545:8
18.	Frost resistance	Resistant	Resistant	ISO 10545:12
19.	Color Resistance to UV light	Resistant	Resistant	ISO 10545:16
Chemical characteristics characteristics				
20.	Stain Resistance	Resistant	Resistant	ISO 10545:14
21.	Chemical Resistance	min class-UB	Conform to classes-UA	ISO 10545:13
22.	Chemical Resistance	min class-ULB	Conform to classes-U LA	ISO 10545:13
23.	Chemical Resistance	min class-ULB	Conform to classes-UHA	ISO 10545:13

PACKING DETAILS

S. NO.	DIMENSIONS (mm)	NO. OF TILES/BOX	THICKNESS	WEIGHT PER BOX	COVERAGE AREA PER BOX	
					(SQUARE FOOT)	(SQUARE METER)
1.	150x1200mm	2 Pcs.	15 mm	15.3 kg	3.87 Sq. Ft.	0.36 Sq. Mtr.
2.	300x1200mm	2 Pcs.	15 mm	23.0 kg	7.74 Sq. Ft.	0.72 Sq. Mtr.
3.	600x1200mm	2 Pcs.	15 mm	46.0 kg	15.5 Sq. Ft.	1.44 Sq. Mtr.

* Vitrified tiles have resistance to most stains/chemicals, but it is recommended to take due care while laying and for day-to-day maintenance.

Resistance to acids & alkalies
(Exception Hydrofluoric Acids & its Compounds)

- 1. Colours in the catalog are as accurate as the printing process allows
- 2. Sizes mentioned in the catalog are nominal sizes only.
- 3. Conforming to ISO requirements, technical specifications for Casa tiles are applicable only for 1st quality tiles.
- 4. Please inspect all tiles prior to installation; the company will not entertain complaints once tiles are laid/fixed.
- 5. For better laying, please follow the instructions on the packaging box.

